

Rainwater. Save. Use.



QUALITY
MADE IN
GERMANY



RAINWATER



HARVESTING

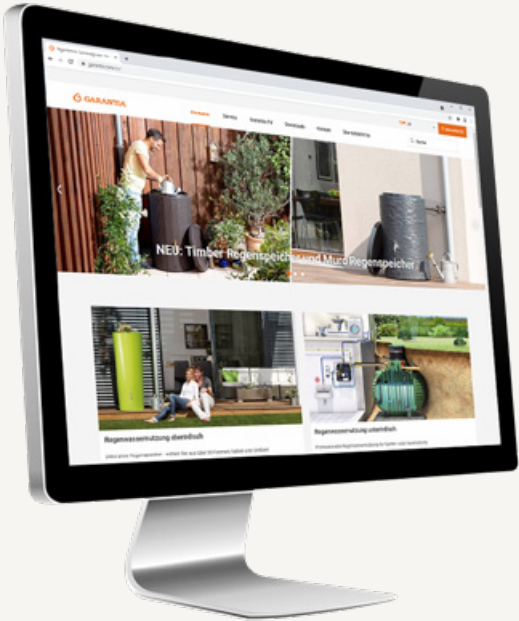


OVERGROUND



UNDERGROUND

We offer



www.garantia.com/en

- Detailed product information
- Product advisor overground tanks
- Product advisor underground tanks
- Download instructions, dimensional drawings, etc.

Specialist advice

export@garantia.com

Numerous product videos



www.garantia.com/en/garantia-tv



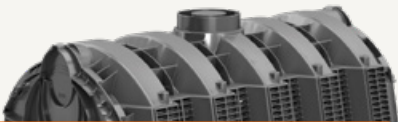
Rainwater storage tanks, overground

| | |
|-----------------------------------|----|
| GARANTIA / 4rain overground tanks | |
| Modern line | 12 |
| Exclusive line | 18 |
| Classic line | 24 |
| Basic line | 44 |
| Downpipe filters | 52 |
| Accessories | 58 |



Rainwater storage tanks, underground

| | |
|------------------------------------|----|
| GARANTIA / 4rain underground tanks | |
| Underground tanks | 62 |
| Filter packages | 88 |
| Technology packages | 92 |
| Accessories | 96 |



Infiltration

| | |
|---------------------|-----|
| Infiltration tunnel | 104 |
|---------------------|-----|



Retention

| | |
|-----------------|-----|
| Retention tanks | 106 |
|-----------------|-----|

Symbols in this catalogue

- Pedestrian loading
- Vehicle loading
- Lorry loading

- Rainwater infiltration
- Garden irrigation

- Toilet flushing
- Washing machine

for a greener planet

Climate change. Our world is currently facing huge challenges. In these times, we need role models. Inspirers who not only preach sustainability, but also put it into practice. Just as we at GRAF are already making an important contribution. After all, it's not just our solutions for rainwater management and other water-related applications that are sustainable through and through. The recycled plastic from which we manufacture our products is also sustainable.

For example, we turn short-lived food packaging into an EcoBloc infiltration module that lasts for generations. This is how we can make our cities a little safer against increasing heavy rainfall events. Or rainwater tanks that allow us to water our gardens with a clear conscience, even during hot spells. Quite incidentally recycling saves us about 100,000 tonnes of CO₂ every year – as much as more than 60,000 cars emit.

By the way: we recycle our products ourselves. Our raw materials competence centre makes us unique. It is our heart, which not only contains all our innovative power, but also our lifeblood. For a better world for all of us – for a greener planet.

Our recycling cycle



This is us

The whole world is talking about sustainability. For us, it has long been a natural part of our DNA. We recognized the potential of rainwater early on: „Rainwater is free“ was one of our first campaigns back in the 1970s. Rain barrels were produced in our family business as early as 1974. The first underground tanks for rainwater harvesting followed just four years later. GRAF rain barrels have been made from recycled material since 1980. By the way, rainwater is still free of charge. But in times of climate change, drought and heavy rainfall events, sustainable water management is much more than that: it is a valuable contribution to our future.

For this we stand



75 %
share of recycling material



Environmental products for
SUSTAINABLE
water management



100,000 TONNES CO₂ savings
every year as much as 60,000 cars emit



LONG SERVICE LIFE
and spare parts supply



Recycling material
FREE FROM POLLUTANTS



80 % share of renewable
energies in production

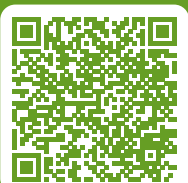


Products
FULLY RECYCLABLE



State-of-the-art production
facilities for **LOW ENERGY**
CONSUMPTION

For further information see:
www.garantia.com/sustainability



learn more

Rainwater storage tanks overground

Every drop counts

Rainwater harvesting is good for the environment. Collecting small amounts of rainwater already conserves our groundwater reserves. This saves the costly treatment of drinking water and the associated CO2 emissions.

When it comes to watering plants, there is nothing better than rainwater. Clean, soft and at a pleasant temperature, it falls from the sky for free. This makes it clearly superior to cold and often hard tap water. As a result, rainwater tanks are becoming a standard element in more and more gardens.



Brass or chrome taps available.
Not included in the scope of supply



Our solutions

With our GARANTIA / 4rain rainwater harvesting tanks we provide you with cost-effective and visually appealing product-solutions. The wide range of GARANTIA / 4rain is divided into four lines: MODERN, EXCLUSIVE, CLASSIC and BASIC.



Aqua-Quick plastic tap
Included in the scope of supply



Choose your tank from over 95 shapes, colors and sizes

MODERN line

» starting page 12



EXCLUSIVE line

» starting page 18



CLASSIC line

» starting page 24



BASIC line

» starting page 44



TIP

Online product advisor

>> www.garantia.com/product-advisor



This is our quality



The integrated planter tray is easily removed and has a depth of 20 cm which allows for individual design with all 2in1 rainwater storage tanks.

Downpipe filters & tank accessories

» starting page 54

Recycling Inside

75 % of all GARANTIA / 4rain products are crafted from recycled raw materials, with some reaching 100 %. The tank material is fully recyclable. Long-life product design begins during the development phase, guaranteeing minimal environmental impact over time.

Childproof

GARANTIA / 4rain stylish tanks feature a closed tank shape or an integrated cover, making them essentially childproof.

Assembly accessories included

Each tank is supplied with matching assembly accessories. This includes, for example, an inlet seal or wind protection for tanks for wall installation.

UV Proof

GARANTIA / 4rain tanks are shielded from sunlight to ensure a long lifespan, minimizing exposure to UV light.

Weatherproof

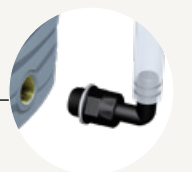
Rainwater tanks are exposed to the weather and large temperature differences. Materials adapted to these conditions assure that the tank has a long-lasting visual appeal.

Threaded connections

A standard 1.9 cm (3/4") threaded connection ensures the easy installation of the outlet tap (accessory) without drilling. Water extraction becomes very easy with an outlet tap.

Comfortable connection

An additional connection is available for water extraction, facilitated by the Aqua-Go hose set (sold separately). This connection also allows for complete emptying before the frost period.




Natura 2in1 water tank



Natura 2in1 water tank 210l
graphite grey, item no. 326156

TIP
Design outlet tap chrome
item no. 330254



>> Details see page 58

Natura 2in1 water tank 210l
ø max. 58 cm | Height 110 cm
Weight 10 kg

graphite grey item no. 326156

Natura 2in1 water tank 350l
ø max. 62 cm | Height 150 cm
Weight 15 kg

arctic item no. 326150
sahara item no. 326152
ocean item no. 326153
graphite grey item no. 326154

TIP
You can find the entire
video at GARANTIA TV at
[garantia.com/v222](https://www.garantia.com/v222)





Natura 2in1 water tank 350l
arctic, item no. 326150

arctic



sahara



ocean



graphite grey





The tank has two integrated, high-quality brass threads. Tap not included in the scope of supply.



Rainwater storage tanks

Rainwater underground tanks

Infiltration


Retention

Color 2in1 water tank



Color 2in1 water tank
tomato, item no. 326102

TIP
Design outlet tap chrome
item no. 330254



>> Details see page 58

Color 2in1 water tank 350l
ø max. 62 cm | Height 150 cm
Weight 15 kg

- | | |
|--------|-----------------|
| apple | item no. 326100 |
| tomato | item no. 326102 |
| coco | item no. 326105 |

TIP
You can find the entire
video at GARANTIA TV at
>> garantia.com/v223





Color 2in1 water tank
apple, item no. 326100

apple



tomato



coco





The tank has two integrated, high-quality brass threads. Tap not included in the scope of supply.



Rainwater storage tanks

Rainwater underground tanks

Infiltration


Retention

Stone 2in1 water tank



Stone 2in1 water tank 210l
lava, item no. 326142

TIP
Design outlet tap chrome
item no. 330254
>> Details see page 58



Stone 2in1 water tank 210l
ø max. 58 cm | Height 110 cm
Weight 10 kg

lava item no. 326142

Stone 2in1 water tank 350l
ø max. 62 cm | Height 150 cm
Weight 15 kg

silver item no. 326140
lava item no. 326141

TIP
You can find the entire
video at GARANTIA TV at
>> [garantia.com/v224](https://www.garantia.com/v224)





Stone 2in1 water tank 350l
silver, item no. 326140



Rainwater storage tanks

Rainwater underground tanks

Infiltration

Retention

Antique Amphora water tank



Antique Amphora water tank 600 l
terracotta, item no. 211612

TIP
Speedy rain collector
Downpipe filter with filter
insert item no. 503040



>> Details see page 54

**Antique Amphora
water tank 250 l**
Width with handles 79 cm
ø max. 70 cm | Height 108 cm
Weight 15 kg
Depth of integrated planter tray 15 cm

terracotta item no. 211601
dark granite item no. 211609

**Antique Amphora
water tank 360 l**
Width with handles 88 cm
ø max. 78 cm | Height 120 cm
Weight 20 kg
Depth of integrated planter tray 17 cm

terracotta item no. 211602
dark granite item no. 211610

**Antique Amphora
water tank 600 l**
Width with handles 104 cm
ø max. 92 cm | Height 142 cm
Weight 30 kg
Depth of integrated planter tray 20 cm

terracotta item no. 211612
dark granite item no. 211614

**Antique wall Amphora
water tank 260 l**
Width with handles 88 cm
Depth 54 cm | Height 120 cm
Weight 20 kg
Depth of integrated planter tray 17 cm

terracotta item no. 211603

TIP
You can find the entire
video at GARANTIA TV at
[garantia.com/v203](https://www.garantia.com/v203)





Antique wall amphora water tank 260 l
terracotta, item no. 211603

terracotta



dark granite





The tank has two integrated, high-quality brass threads. Tap not included in the scope of supply.



Due to the manufacturing process, each Antique amphora is unique.

Woody wall tank

Sunda wall tank



Woody wall tank 350I
Width 124 cm | Depth 40 cm
Height 100 cm | Weight 35 kg

darkwood item no. 212200
lightwood item no. 212201

Woody wall tank
lightwood, item no. 212201



Sunda wall tank 300I
Width 80 cm | Depth 40 cm
Height 118 cm | Weight 16 kg

mocca item no. 212100



TIP
You can find the entire video at GARANTIA TV at
garantia.com/v226

darkwood



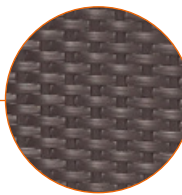
lightwood



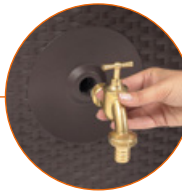
The tank has three integrated, high-quality brass threads. Tap not included in the scope of supply.



Each Woody is unique due to the manufacturing process.



Very high-quality tank with a modern wicker finish



The tank has two integrated threads. Tap not included in the scope of supply.



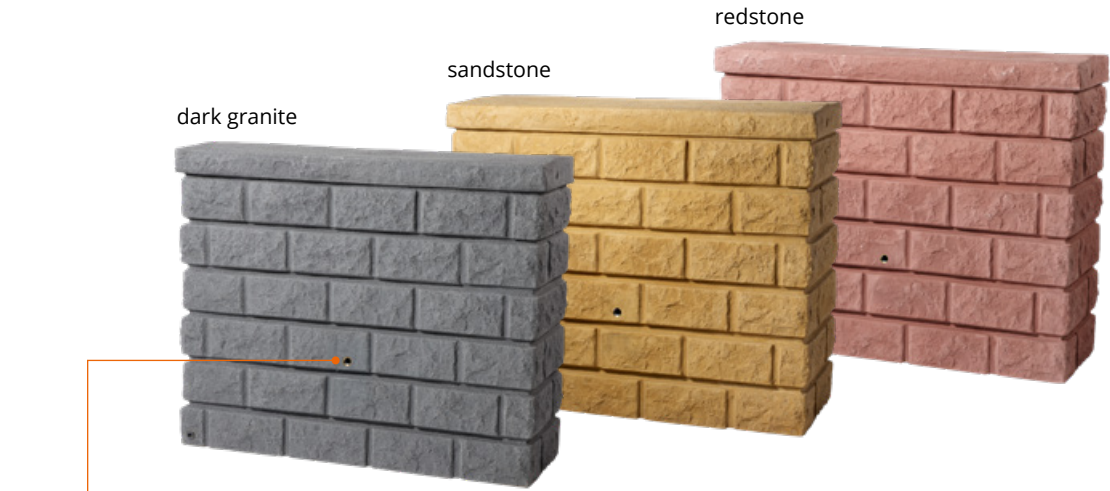
Rocky wall tank

Rocky wall tank 400l

Width 120 cm | Depth 40 cm
Height 100 cm | Weight 35 kg

- dark granite item no. 326130
- sandstone item no. 326132
- redstone item no. 326131

TIP
You can find the entire video at GARANTIA TV at
garantia.com/v225



The tank has two integrated, high-quality brass threads. Tap not included in the scope of supply.



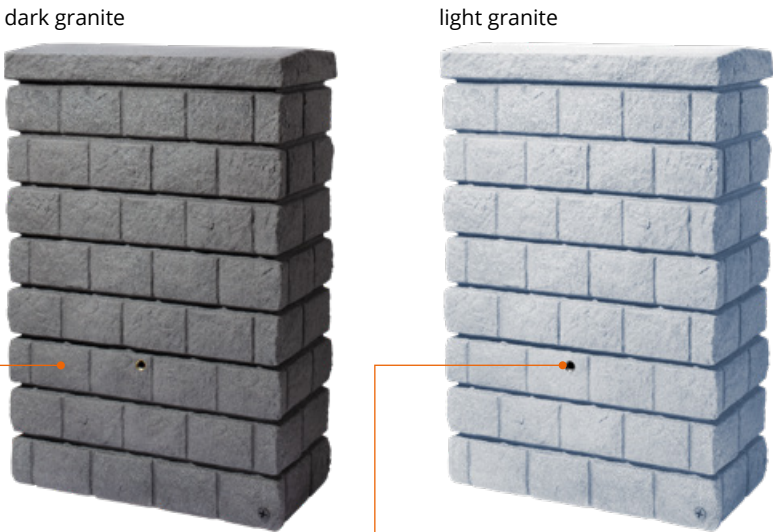
Rocky jr. wall tank



Rocky Junior wall tank 300l

Width 80 cm | Depth 40 cm
Height 118 cm | Weight 29 kg

- dark granite item no. 326138
- light granite item no. 326139



Each Rocky Junior is unique due to the manufacturing process.



The tank has two integrated, high-quality brass threads. Tap not included in the scope of supply.



Elegance wall tank

Elegance wall tank 400l

Width 60 cm | Depth 60 cm
Height 180 cm | Weight 18 kg

stone grey item no. 212301
sandbeige item no. 212302

Elegance wall tank
sandbeige, item no. 212302



TIP
You can find the entire
video at GARANTIA TV at
garantia.com/v236



stone grey



sandbeige



The tank has two
integrated threads.
Tap not included in
the scope of supply.



Column tank



Column tank 330l

ø max. 59 cm | ø Cover 18 cm
Height 161 cm | Weight 14 kg

sandbeige item no. 326530
stone grey item no. 326531

Column tank 500l

ø max. 73 cm | ø Cover 18 cm
Height 193 cm | Weight 25 kg

sandbeige item no. 326510
stone grey item no. 326512

Column tank 1.000l

ø max. 91 cm | ø Cover 18 cm
Height 222 cm | Weight 44 kg

sandbeige item no. 326505
stone grey item no. 326506

Column tank 2.000l

ø max. 118 cm | ø Cover 18 cm
Height 223 cm | Weight 75 kg

sandbeige item no. 326540

Column tank 330l
stone grey, item no. 326531



TIP
You can find the entire
video at GARANTIA TV at
garantia.com/v235



The tank has two integrated
threads. Tap not included in
the scope of supply.



Nordic 2in1 water tank

Nordic water tank



Nordic 2in1 water tank 300l
ø max 59 cm | Height 118 cm
Weight 8 kg

graphite grey item no. 326180
stone grey item no. 326182

Nordic 2in1 water tank
stone grey, item no. 326182

Nordic water tank 300l
ø max 59 cm | Height 118 cm
Weight 8 kg

graphite grey item no. 326181
stone grey item no. 326183

Nordic water tank 500l
ø max 61 cm | Height 185 cm
Weight 16 kg | ø Cover 18 cm

graphite grey item no. 326190

Nordic water tank 500l
graphite grey, item no. 326190

TIP
You can find the entire
video at GARANTIA TV at
>> garantia.com/v230



TIP
You can find the entire
video at GARANTIA TV at
>> garantia.com/v229



graphite grey



stone grey

With integrated
plant tray for
individual design.



The tank has two
integrated threads.
Tap not included in
the scope of supply.



graphite grey



stone grey

Removable cover for water
extraction with integrated
child-proof lock.



The tank has two
integrated threads.
Tap not included in
the scope of supply.

2in1 water tank

2in1 water tank 300l
ø max. 62 cm | Height 145 cm
Weight 12 kg

mocca item no. 326109
graphite grey item no. 326117
zinc grey item no. 326111

TIP
You can find the entire video at GARANTIA TV at
>> [garantia.com/v227](https://www.garantia.com/v227)



4rain | Vaso 2in1 Decor water tank



4rain | Vaso 2in1 Decor water tank 220l
ø max. 58 cm | Height 120 cm
Weight 10 kg

zinc grey item no. 295642
graphite grey item no. 295643



mocca

graphite grey

zinc grey

The tank has two integrated threads. Tap not included in the scope of supply.



green planet collection
100 % RECYCLED



zinc grey

graphite grey

Filter tip: Speedy (page 54)

Incl. Aqua-Quick tap: quick and easy installation



green planet collection
100 % RECYCLED

4rain | Madera water tank

4rain | Madera water tank 220l
ø max. 57 cm | Height 93 cm
Weight 10 kg

brown item no. 295655



Filter tip: Speedy (page 54)



Incl. Aqua-Quick tap: quick and easy installation



4rain | Vino rainwater barrel



4rain | Vino rainwater barrel 250l
ø max. 65 cm | Height 93 cm
Weight 10 kg

brown item no. 295630

4rain | Vino rainwater barrel 400l
ø max. 78 cm | Height 105 cm
Weight 16 kg

brown item no. 295631



Filter tip: Speedy (page 54)



Incl. Aqua-Quick tap: quick and easy installation



4rain | Arondo water tank

4rain | Arondo water tank 250l
ø max. 60 cm | Height 93 cm
Weight 10 kg

graphite grey item no 295650

4rain | Arondo water tank 400l
ø max. 79 cm | Height 104 cm
Weight 16 kg

graphite grey item no. 295651



4rain | Arondo water tank 250l
graphite grey, item no. 295650



Filter tip: Speedy
(page 54)



Incl. Aqua-Quick tap:
quick and easy
installation



4rain | Amphora water tank



Amphora water tank 240l
ø max. 59 cm | ø Cover 18 cm
Height 118 cm | Weight 8 kg

terracotta item no. 211700

Amphora water tank 300l
ø max. 68 cm | ø Cover 18 cm
Height 129 cm | Weight 10 kg

terracotta item no. 211701

Amphora water tank 500l
ø max. 79 cm | ø Cover 18 cm
Height 150 cm | Weight 14 kg

terracotta item no. 211702

4rain | Amphora
water tank 220l
ø max. 59 cm | ø Cover 18 cm
Height 118 cm | Weight 8 kg

graphite grey item no. 295665



4rain | Amphora water tank 220l
graphite grey, item no. 295665



graphite grey



Incl. Aqua-Quick tap:
quick and easy
installation



terracotta



The tank has two
integrated threads.
Tap not included in
the scope of supply.



4rain | Terra wall tank

Terranova wall tank 275l

Width 80 cm | **Depth** 40 cm
Height 105 cm | **Weight** 12 kg

graphite grey item no. 212120

4rain | Terra wall tank 275l

Width 80 cm | **Depth** 40 cm
Height 105 cm | **Weight** 12 kg

sandbeige item no 295600



4rain | Slim Stone Decor wall tank



**4rain | Slim Stone Decor
wall tank 510l**

Width 80 cm | **Depth** 60 cm
Height 123 cm | **Weight** 20 kg

graphite grey item no. 211840



4rain | ExtraSlim Stone Decor wall tank



4rain | ExtraSlim Stone Decor wall tank 400l
sandbeige, item no. 211830

4rain | ExtraSlim Stone Decor wall tank 400l

Width 119 cm | Depth 28 cm
Height 184 cm | Weight 31 kg

graphite grey item no. 211831
sandbeige item no. 211830



ExtraSlim Stone Decor wall tank 400l
graphite grey, item no. 211831



Filter tip: Filling device
de luxe (page 56)



Incl. Aqua-Quick tap:
quick and easy
installation



4rain | Slim Stone Decor wall tank

4rain | Slim Stone Decor wall tank 350l

Width 60 cm | Depth 39 cm
Height 184 cm | Weight 18 kg

graphite grey item no. 211860
sandbeige item no. 211861

4rain | Slim Stone Decor wall tank 500l

Width 75 cm | Depth 51 cm
Height 184 cm | Weight 25 kg

graphite grey item no. 211820
sandbeige item no. 211821



4rain | Slim Stone Decor wall tank 350l
sandbeige, item no. 211861

4rain | Slim Wood Decor wall tank



4rain | Slim Wood Decor wall tank 350l

Width 60 cm | Depth 39 cm
Height 184 cm | Weight 18 kg

graphite grey item no. 211871
darkwood item no. 211870



4rain | Slim Wood Decor wall tank 350l
graphite grey, item no. 211871



sandbeige



graphite grey



Filter tip: Filling device
de luxe (page 56)



Incl. Aqua-Quick tap:
quick and easy
installation



graphite grey



darkwood



Filter tip: Speedy
(page 54)



Incl. Aqua-Quick tap:
quick and easy
installation



4rain | Milo 2in1 water tank

4rain | Milo 2in1
water tank 230l
ø max. 59 cm | Height 114 cm
Weight 7 kg
graphite grey item no. 295662



Filter tip: Speedy
(page 54)



Incl. Aqua-Quick tap:
quick and easy
installation



4rain | Jolie 2in1 water tank

4rain | Jolie 2in1
water tank 230l
ø max. 59 cm | Height 114 cm
Weight 7 kg
graphite grey item no. 295661



Filter tip: Speedy
(page 54)



Incl. Aqua-Quick tap:
quick and easy
installation



4rain | Azura 2in1
water tank

4rain | Azura 2in1
water tank 120l
ø max. 52 cm | Height 110 cm
Weight 7.5 kg
(incl. water butt stand)

graphite grey item no. 295658

4rain | Azura 2in1
water tank 230l
ø max. 59 cm | Height 114 cm
Weight 7 kg

graphite grey item no. 295660



Filter tip: Speedy
(page 54)



Incl. Aqua-Quick tap:
quick and easy
installation



4rain | Vaso 2in1
water tank



4rain | Vaso 2in1
water tank 220l
ø max. 58 cm | Height 120 cm
Weight 10 kg

graphite grey item no. 295640



Filter tip: Speedy
(page 54)



Incl. Aqua-Quick tap:
quick and easy
installation




Cubus garden tank



Cubus garden tank 700l
concrete grey, item no. 326045

TIP
Connection set instant
item no. 220023
» Details see page 59



Cubus garden tank 340l
Width 59 cm | Depth 59 cm
Height 112 cm | Weight 8.5 kg
ø Cover 18 cm

concrete grey item no. 326042

Cubus garden tank 700l
Width 80 cm | Depth 60 cm
Height 179 cm | Weight 27.5 kg
ø Cover 18 cm

concrete grey item no. 326045

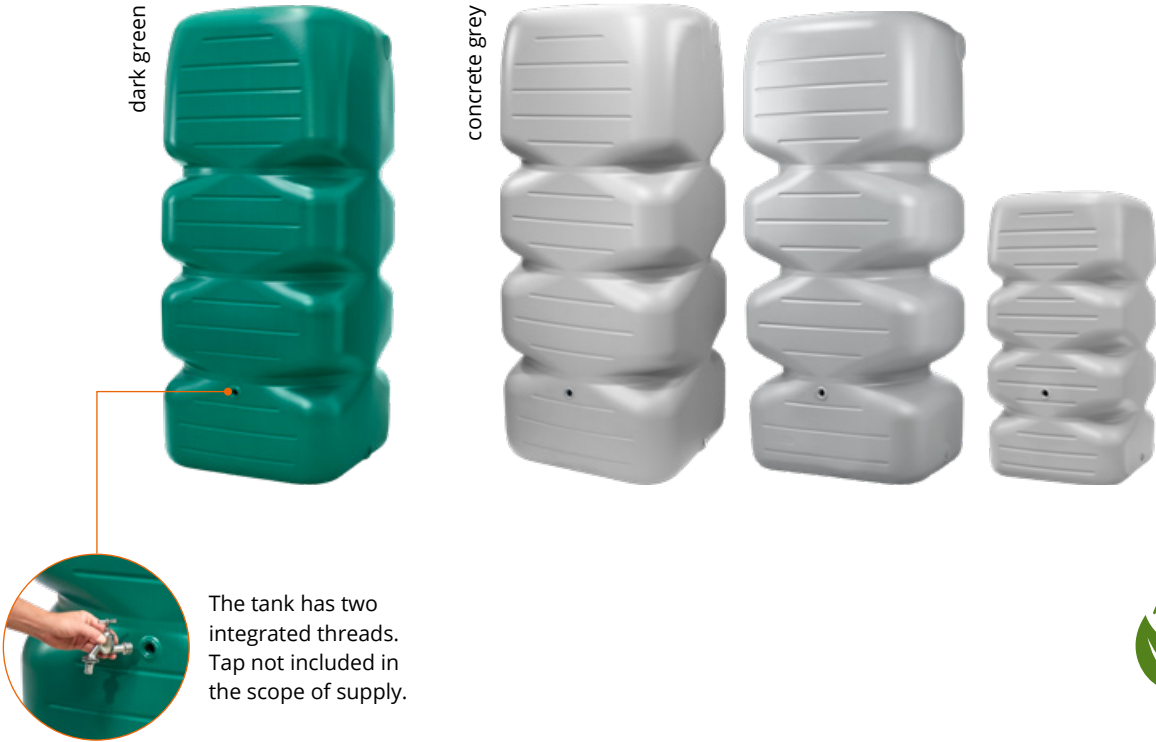
Cubus garden tank 1.000l
Width 80 cm | Depth 80 cm
Height 184 cm | Weight 30 kg
ø Cover 18 cm

dark green item no. 326040
concrete grey item no. 326041



Cubus garden tank 1.000l
dark green, item no. 326040

TIP
You can find the entire
video at GARANTIA TV at
» garantia.com/v237



4rain | Garden tank Classic

Top-Tank

Garden tank
Classico 650l

Width 80 cm | Depth 60 cm
Height 192 cm | Weight 28 kg
ø Cover 18 cm

dark green item no. 326030

4rain | Garden tank
Classic 650l

Width 80 cm | Depth 60 cm
Height 192 cm | Weight 28 kg
ø Cover 18 cm

sandbeige item no. 295606

- Suitable for installation in the garden and in the cellar
- Expandable as required
- With 1.9 cm (3/4") threaded connection

Garden tank
Classico 1.300l

Set consists of 2 x 650 l tank incl. connection set (drill, seal, connection piece)
Width 165 cm | Depth 60 cm
Height 192 cm | Weight 56 kg
ø Cover 18 cm

dark green item no. 326035

Garden tank
Classico 2.600l

Set consists of 4 x 650 l tank incl connection sets (drill, seal, connection piece)
Width 335 cm | Depth 60 cm
Height 192 cm | Weight 112 kg
ø Cover 18 cm

dark green item no. 326036



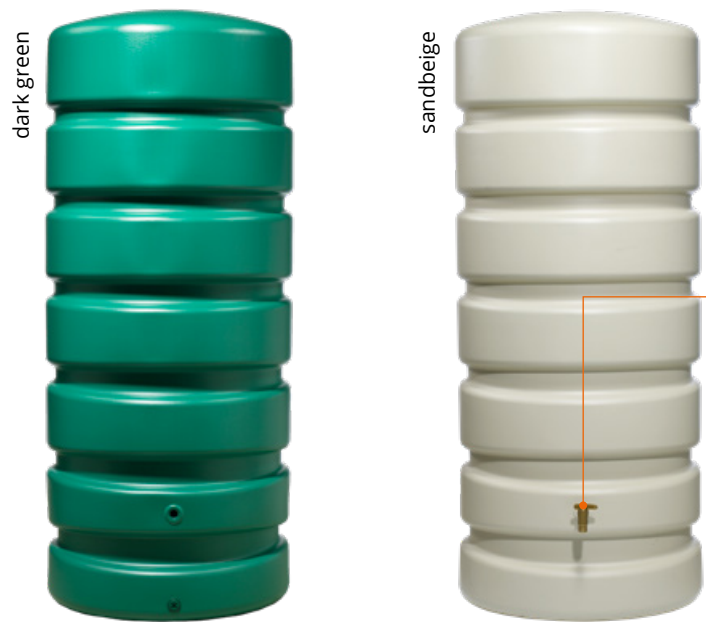
Top-Tank

- Inexpensive solution for overground rainwater harvesting
- Extremely stable
- Expandable as required
- Moulded sockets: 2 x DN75, 2 x DN110 and 1 x DN200 suitable for standard HT/KG pipes
- Convenient for transportation because it is delivered in two halves

Top-Tank 1.300l

ø max. 118 cm | Height 156 cm
Weight 35 kg

dark green item no. 323001



Filter tip: Filling device de luxe (page 56)



Incl. Aqua-Quick tap: quick and easy installation



Tap not included in the scope of supply.



Top-Tank accessories

DN75 extension set

Consisting of 2 pieces of special seals (without drill and connection pipes)
Item no. 322010

DN75 drill

With drive arbour item no. 202002

Water butts



Square Ibiza water butt, 300l
graphite grey, item no. 501214

TIP
Rapido Rain collector
item no. 503070
» See details page 54



Lanzarote water butt

graphite grey, incl. cover,
outlet tap and child-proof lock

| Volume [l] | Height 1) [cm] | ø max. [cm] | item no. |
|---------------|-------------------|----------------|-------------|
| 300 | 86 | 82 | 500222 |

Lanzarote
water butt stand



| Height [cm] | Color | item no. |
|----------------|---------------|-------------|
| 33 | graphite grey | 502015 |



Siena water butt

taupe, incl. cover,
outlet tap and child-proof lock

| Volume [l] | Height 1) [cm] | ø max. [cm] | item no. |
|---------------|-------------------|----------------|-------------|
| 300 | 86 | 82 | 500227 |

Siena
water butt stand



| Height [cm] | Color | item no. |
|----------------|-------|-------------|
| 33 | taupe | 502016 |



Round water butt

dark green,
incl. cover and outlet tap

| Volume [l] | Height 1) [cm] | ø max. [cm] | item no. |
|---------------|-------------------|----------------|-------------|
| 210 | 80 | 77 | 500212 |
| 310 | 94 | 80 | 500213 |
| 510 | 110 | 100 | 500214 |

Water butt stand



| suitable for round water butt [l] | Height [cm] | item no. |
|--------------------------------------|----------------|-------------|
| 210 | 33 | 502001 |
| 310 | 33 | 502002 |
| 510 | 33 | 502003 |



Square Ibiza water butt

graphite grey,
incl. cover and outlet tap

| Volume [l] | Width [cm] | Depth [cm] | Height 1) [cm] | item no. |
|---------------|---------------|---------------|-------------------|-------------|
| 300 | 79 | 79 | 94 | 501214 |

Water butt stand



| Height [cm] | Color | item no. |
|----------------|---------------|-------------|
| 33 | graphite grey | 502024 |



Square water butt

graphite grey,
incl. cover and outlet tap

| Volume [l] | Width [cm] | Depth [cm] | Height 1) [cm] | item no. |
|---------------|---------------|---------------|-------------------|-------------|
| 300* | 80 | 66 | 92 | 501204 |

*incl. metal bar to improve the stability

Water butt stand



| Height [cm] | Color | item no. |
|----------------|---------------|-------------|
| 33 | graphite grey | 502021 |



Square water butt

dark green,
incl. cover and outlet tap

| Volume [l] | Width [cm] | Depth [cm] | Height 1) [cm] | item no. |
|---------------|---------------|---------------|-------------------|-------------|
| 203 | 70 | 70 | 82 | 501205 |
| 300* | 80 | 66 | 92 | 501206 |
| 520* | 124 | 80 | 93 | 501207 |

*incl. metal bar to improve the stability

Water butt stand



| suitable for square water butt [l] | Height [cm] | item no. |
|---------------------------------------|----------------|-------------|
| 203 | 33 | 502001 |
| 300 | 33 | 502004 |
| 520 | 33 | 502005 |

¹⁾Height incl. Cover

4rain | Slim wall tank

4rain | Slim wall tank 350l

Width 60 cm | Depth 39 cm
Height 184 cm | Weight 18 kg

sandbeige item no. 211850
dark green item no. 211851

4rain | Slim wall tank 650l

Width 79 cm | Depth 52 cm
Height 210 cm | Weight 36 kg

sandbeige item no. 211803
dark green item no. 211804



4rain | Slim wall tank 350l
sandbeige, item no. 211850

4rain | Quadro wall tank

4rain | Quadro wall tank 170l

Width 42 cm | Depth 40 cm
Height 118 cm | Weight 7 kg

concrete grey item no. 295670

4rain | Quadro wall tank 270l

Width 42 cm | Depth 40 cm
Height 185 cm | Weight 13.5 kg

concrete grey item no. 295675

4rain | Quadro wall tank 500l

Width 80 cm | Depth 62 cm
Height 122 cm | Weight 16.5 kg

concrete grey item no. 295685



4rain | Quadro wall tank 500l
concrete grey, item no. 295685



Filter tip: Filling device
de luxe (page 56)



Incl. Aqua-Quick tap:
quick and easy
installation



Filter tip: Speedy
(page 54)



Incl. Aqua-Quick tap:
quick and easy
installation



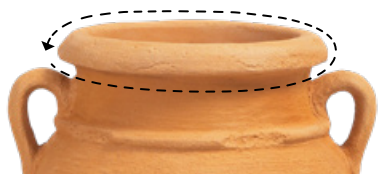
Downpipe filters

Rain collectors and downpipe filters

>> starting page 54

Downpipe filters reliably remove contaminants from rainwater, ensuring the best water quality. Overflowing of the rainwater barrel is prevented by the overflow stop mechanism, allowing excess water to flow back into the downpipe. Additionally, the inflow to the rainwater tank can be halted with a simple switch during winter.

Connection position can be chosen flexibly



Universal hose set

>> starting page 59

The universal hose set and the Aqua-Go hose set (accessories) offer an additional drawing option. They serve to utilise the full tank volume and are a fill level indicator. The universal hose set is either screwed into the tank's pre-fitted connection or installed on the tank using a drill and a seal (both included in the scope of supply). The Aqua-Go hose set can simply be screwed in if a threaded connection is available.

Structure and connection of a rainwater storage tank

This video shows you how to easily set up an over-ground tank, what to pay attention to and how to connect it to the downpipe.



TIP

You can find the entire video at GARANTIA TV at

>> www.garantia.com/en/garantia-tv



Outlet tap

>> starting page 58

Water drawing becomes very convenient thanks to the outlet tap. It is screwed into the standard threaded connection of the tank.



Rain collectors

The assembly champions

Installed in 5 minutes

Drill



Plug-in



Ready



| Rain collector | Speedy | Rapido | Rapido Quattro |
|---|--|---|---|
| Downpipe diameter | 7 – 10 cm | 7 – 10 cm | 9 x 6.5 cm |
| Overflow stop function | • | • | • |
| Max. recommended roof area | 80 m² | 80 m² | 50 m² |
| Water butt connection | 3.2 cm (1 ¼") | 3.2 cm (1 ¼") | 3.2 cm (1 ¼") |
| Required distance between downpipe and wall | - | - | - |
| Switch for summer / winter operation | • | • | • |
| Filter element | Plastic sieve | - | - |
| Dimensions | Length 16 cm Width 6.5 cm Height 9 cm | Length 9 cm Width 5.5 cm Height 5.5 cm | Length 9 cm Width 5.5 cm Height 5.5 cm |
| Item no. | 503040 | 503070 | 503071 |



- It is not required to remove the downpipe for installation
 - Complete set with core drill, tank connection seal and flexible 40 cm hose
- ✓ With filter insert
✓ Summer and winter operation



- It is not required to remove the downpipe for installation
 - Complete set with core drill, tank connection seal and flexible 40 cm hose
- ✓ Summer and winter operation



- It is not required to remove the downpipe for installation
 - Complete set with core drill, tank connection seal and flexible 40 cm hose
- ✓ Summer and winter operation



TIP
Downpipe filter assembly
>> garantia.com/v204



Downpipe filters

| Downpipe filter | Filling device de luxe* | Filling device | Filling device Mini | Regendieb Pro* | Regendieb | Foliage guard |
|---|---------------------------------|---------------------------------|---------------------------------|---------------------------------|--|--|
| Downpipe diameter | 7/8/10 cm | 7 – 10 cm | 5 – 6 cm | 7/8/10 cm | 7 – 10 cm | 7 – 10 cm |
| Overflow stop function | • | • | • | • | • | – |
| Max. recommended roof area | 80 m² | 50 m² | 50 m² | 200 m² | 200 m² | 80 m² |
| Water butt connection | 3.2 cm (1 ¼") | 2.5 cm (1") | 2.5 cm (1") | DN50, 3.2 cm (1 ¼") | DN70 DN50, 3.2 cm (1 ¼") | – |
| Required distance between downpipe and wall | 2.5 cm | 1.6 cm | 1.7 cm | 1.6 cm | 2.5 cm | 0.5 cm |
| Switch for summer / winter operation | • | • | • | • | • | • |
| Filter element | Plastic sieve | Plastic sieve | Plastic sieve | Stainless steel fine sieve | Stainless steel fine sieve | Plastic sieve |
| Dimension | Height 15 cm ø 15 cm | Height 11.5 cm ø 13 cm | Height 9.5 cm ø 8 cm | Height 25.5 cm ø 13 cm | Height 25 cm Width 15 cm Depth 20 cm | Height 35 cm Width 11 cm Depth 18 cm |
| Color item no. | grey 503015 brown 503014 | grey 503011 brown 503010 | grey 503006 brown 503005 | grey 344200 brown 344201 | grey 343011 | grey 346013 |

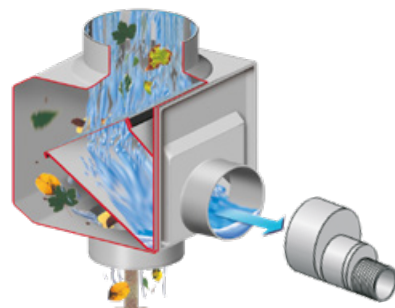


Incl. 25 cm hose and screw connection



- Filter concept with significantly larger filter surface
- Rotatable filter housing
- For flexible connection
- Incl. tank connection seal
- Self-cleaning and easy to maintain
- Recommended accessories: Flex-Comfort connection set, page 59

The slim master for large roofs for roof areas up to 200 m²



- Incl. tank connection seal
- Recommended accessories: Flex-Comfort connection set, page 59



- Reliably separates leaves and coarse contaminants
- Ideal in areas with a lot of leaves, e.g. as pre-filter
- Self-cleaning and easy to maintain
- Screen surface can be comfortably removed without removing the filter

*For convenient maintenance, a downpipe sliding sleeve for downpipe sizes 70/80 is required.



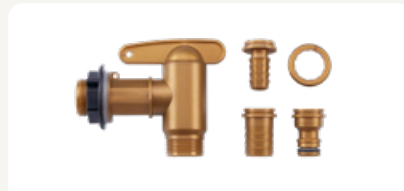
Accessories – overground tanks



Design outlet tap chrome

This stylish chrome outlet tap is ideal for rainwater tanks from the Modern line. Polished chrome, size 1.9 cm (¾"), Teflon tape included.

Item no. 330254



Aqua-Quick plastic tap set, 4 pieces

So that water can flow quicker! Complete set of plastic tap in brass design consisting of: Tap with seal and screw connection, connection piece for commercially available hose coupling, 1.3 cm (½") and 1.9 cm (¾"), union nut and seals.

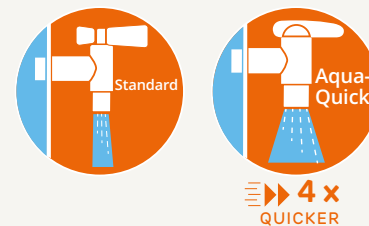
Item no. 504044



Aqua-Quick plastic tap

So that water can flow quicker! The Aqua-Quick plastic tap has a 4 x quicker water flow rate than conventional outlet taps. In brass design, suitable for all overground tanks and water butts, size 1.9 cm (¾"), with sealing ring and lock nut.

Item no. 504040



Outlet tap

A must-have for any stylish tank! Suitable for all products of the Classic and Exclusive line, size 1.9 cm (¾"), Teflon tape included.

brass item no. 220011
chrome item no. 330282



Tank screw connection

With internal 1.9 cm (¾") thread made of plastic, suitable for all outlet taps.

Item no. 504025



Outlet tap with tank screw connection

Suitable for Herkules, Top- and Garden tanks. Brass, size 1.9 cm (¾"), incl. Teflon tape.

Item no. 330044



Water butt outlet tap

With seal and lock nut 1.9 cm (¾").

Item no. 504011



1" Hose connector

for 3.2 cm hose, incl. seal and lock nut

Item no. 220021



Water butt overflow bend

With hose connection

3.2 cm (1 ¼") Item no. 330041
5.1 cm (2") Item no. 330043



Universal ¾" hose set

Set for complete emptying and water level indication of overground rainwater storage tanks. Consisting of 2.15 m flexible hose, Aqua-Quick plastic tap, drill and assembly accessories. Suitable for every tank.

Item no. 220015



Water butt connection set

Consisting of two hose nozzles with lock nut and 25 cm hose.

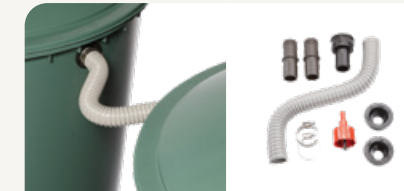
1.9 cm (¾") item no. 504017
1.9 cm (¾") with drill item no. 504018
3.2 cm (1 ¼") item no. 330031
5.1 cm (2") item no. 330040



Water butt child-proof lock/wind protection

For water butt cover (reusable), 4 pieces

Item no. 504016



Flex-Comfort connection set

Extra-long and highly flexible connection set (40 cm) for connecting rainwater tanks and for connecting to the downpipe filters Regendieb and Regendieb Pro. Incl. assembly accessories.

Scope of supply:

Flexible 40 cm connection hose, core drill and hose nozzle; 2 x connection pieces each, inlet seal and hose clamp.

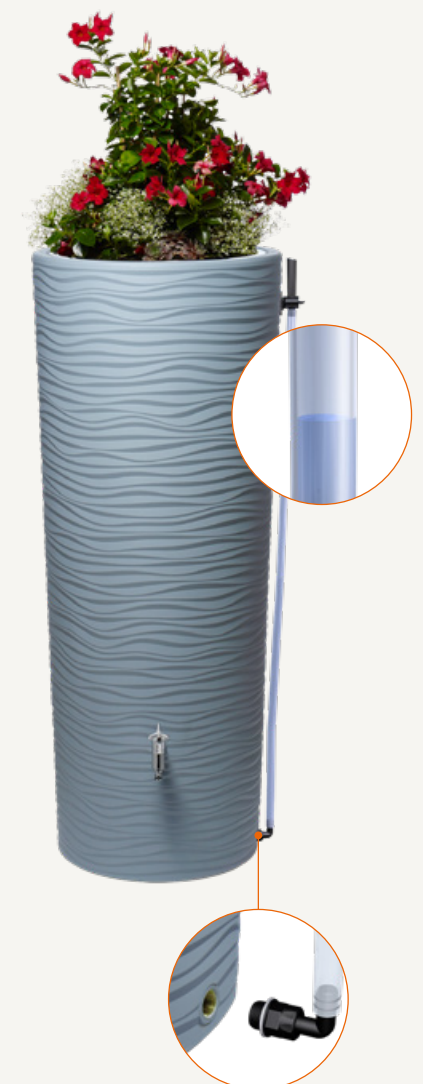
grey item no. 220019
brown item no. 220020



Aqua-Go hose set

Convenient water extraction from any height, suitable for all overground rainwater tanks. The transparent hose always shows the current fill level up to a height of 2 m.

1.9 cm (¾") item no. 220022



Rainwater harvesting is an active way to protect the environment



Drinking water is a strictly controlled commodity. So why should it be used to water the garden or for flushing toilets?

A professional rainwater harvesting system provides you with water of the best quality – clear and odourless. This way, you not only save up to 50 % of your drinking water expenses, but also conserve our groundwater supplies.



More information on the topic of sustainability

>> www.garantia.com/sustainability



Durable and 100 % recyclable

As a standard practice, we prioritize waste avoidance. All GARANTIA / 4rain products are fully recyclable and designed for maximum durability. Over time, this reduces resource demand and minimizes environmental impact.

In-house recycling

Thanks to many years of intensive research, 75 % of our products are made from recycled raw materials. This further improves the environmental balance of our product range.

Green production

State-of-the-art production facilities ensure significantly lower energy consumption than the industry standards. The heat generated during production is used by a modern heat recovery system to heat the production and logistics buildings. This optimises the CO2 balance of GARANTIA / 4rain products.

Modular system

>> starting page 64

Underground tank assortment

>> starting page 68

Internal and external filters

>> starting page 88

Invest once and save up to 50 % of drinking water!

Not all domestic applications require drinking water quality. With little effort, groundwater reserves can be conserved and the energy consumption for drinking water treatment reduced. Our rainwater harvesting systems help in making this possible – and also serve to prevent flooding and preserve the natural water cycle. The possible savings are up to 50 %!

Our products come with everything you need for professional rainwater harvesting. They are sophisticated and ideal for self-installation.

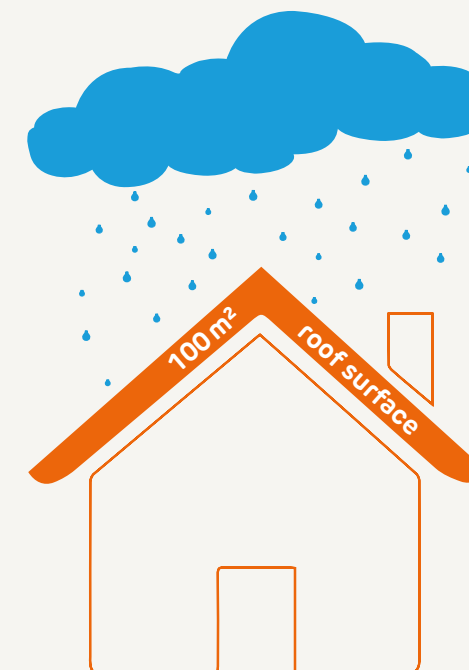
What you need drinking water for:



This can be substituted:

65 litres in total

Did you know?



7.000 litres of free rainwater / month*



*Ø Precipitation in Germany 850 L/m² x 100 m²/12 months

Our underground tanks



**RECYCLING
INSIDE**



Everything can be integrated in the tank

Filter rainwater inside the tank and then use it for watering the garden, flushing the toilet and washing the laundry. GARANTIA / 4rain offers you different solutions for filter systems and rainwater harvesting. Thanks to the integrable filter technology, no separate filter shaft is required. The assembly becomes quick and easy without the need for tools.

GARANTIA tank cover

Whether it's a green plastic cover for pedestrian loading or the vehicle loading version made of cast iron: GARANTIA provides the appropriate cover for every installation scenario.

Connection possibilities

All GARANTIA / 4rain underground tanks are fully prepared for pipe connection. Tanks and manholes come with pre-assembled lip seals.

Easy installation

GARANTIA / 4rain underground tanks are easy to handle thanks to their relatively low empty weight and still offer the required stability.

100 % recyclable

GARANTIA / 4rain tanks are 100 % recyclable. Long-life product design is a top priority during the product development phase. The production takes place in the most modern production facilities. This ensures less environmental impact in the long run.



4rain | tank cover
pedestrian loading only

TIP

Use the online product advisor to interactively calculate the required rainwater tank volume.

>> www.garantia.com/tank-advisor

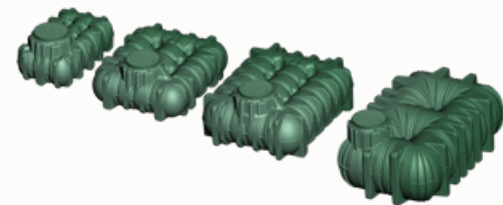


GARANTIA

Modular system for underground tanks

Create your system individually by choosing from four components.

Underground tank



Li-Lo underground tank incl. PE cover, pedestrian loading
See page 68

1.500 l
Item no. 200050

5.000 l
Item no. 200052

3.000 l
Item no. 200051

7.500 l
Item no. 200053



Cristall underground tank incl. PE cover, pedestrian loading
See page 70

1.600 l
Item no. 200010

2.650 l
Item no. 200011



Columbus underground tank incl. PE cover, pedestrian loading
See page 72

3.700 l
Item no. 200020

6.500 l
Item no. 200022

4.500 l
Item no. 200021

Tank dome / cover



Telescopic dome shaft Cristall
See page 74

Item no. 202058



Telescopic dome shaft Columbus / Li-Lo
See page 74

Item no. 202057

OPTIONAL



Tank cover for vehicle loading
Max. vehicle weight 3.5 t
See page 74

Item no. 202059

Filter package



Filter package 1
See page 88

Item no. 202044



Filter package Cristall
See page 89

Item no. 202569



Filter package Columbus / Li-Lo
See page 89

Item no. 202556

Technology package



Garden-Jet pump package
See page 92

Item no. 202562



Garden-Comfort pump package
See page 93

Item no. 202561



House package PRO line
See page 95

Item no. 202576

4rain Modular system for underground tanks

Create your system individually by choosing from three components.

Underground tank (including Tank dome / cover)



4rain | Flat underground tank, pedestrian loading

See page 76

1.500 l

Item no. 295120

5.000 l

Item no. 295126

3.000 l

Item no. 295115

7.000 l

Item no. 295170



4rain | Modularis underground tank, pedestrian loading

See page 78

2.500 l

Item no. 295022



4rain | Compact underground tank, pedestrian loading

See page 80

1.600 l

Item no. 295300

2.650 l

Item no. 295301



4rain | Promo underground tank, pedestrian loading

See page 82

4.100 l

Item no. 295205



4rain | Mono underground tank, pedestrian loading

See page 84

3.000 l

Item no. 295005

5.000 l

Item no. 295004

4.000 l

Item no. 295003

6.800 l

Item no. 295020



Herkules underground tank, pedestrian loading

See page 86

1.600 l

Item no. 320001

Filter package



Filter package 1

See page 88

Item no. 202044

Technology package



Garden-Jet pump package

See page 92

Item no. 202562



Garden-Comfort pump package

See page 93

Item no. 202561



House package PRO line

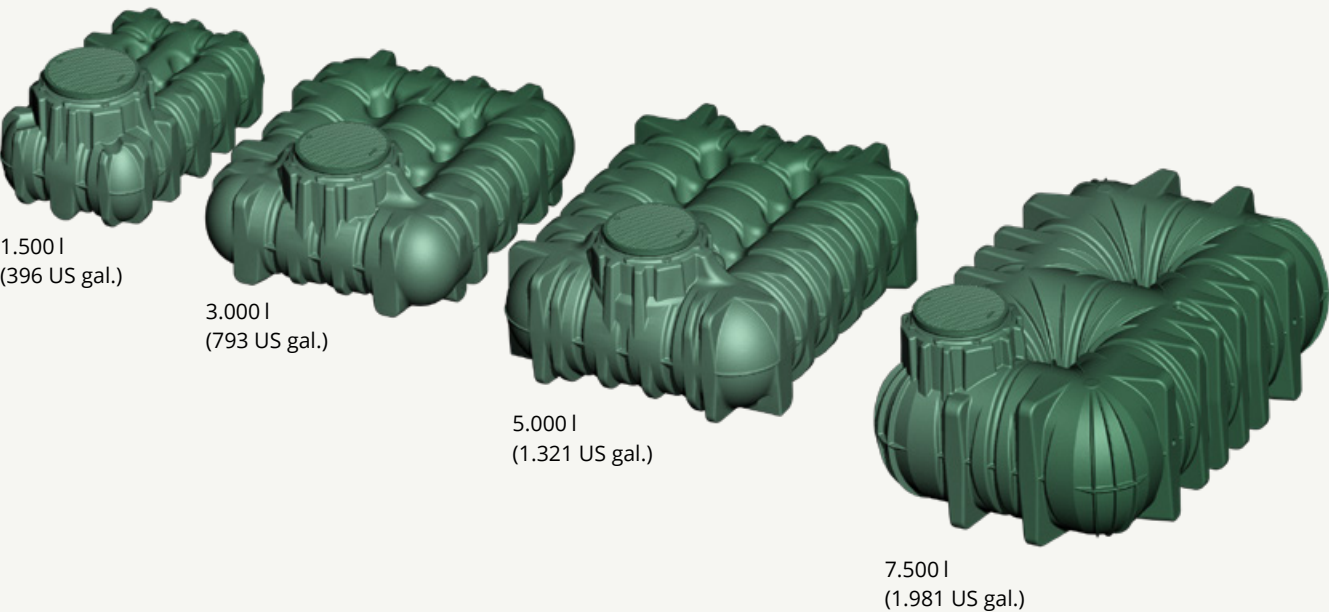
See page 95

Item no. 202576

Li-Lo underground tank



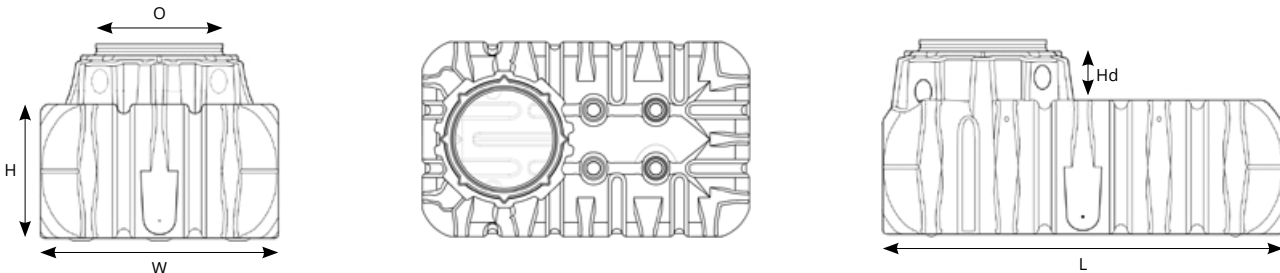
- ✓ Easy transport thanks to its low weight
- ✓ Extremely little excavation required
- ✓ Quick and easy assembly
- ✓ Self-anchoring
- ✓ Can be mounted in groundwater up to the tank shoulder
- ✓ Includes double-walled PE lid



The Li-Lo underground flat-tank with a tank dome Ø of 65 cm (25.6") and 4 x DN110 (4") lip seals, including child-proof PE cover with double walls, in green color.

| Volume [l] | Length L [cm] | Width W [cm] | Height to tank shoulder H [cm] | Height of tank dome Hd [cm] | Ø tank opening O [cm] | Weight [kg] | Item no. |
|------------|---------------|--------------|--------------------------------|-----------------------------|-----------------------|-------------|----------|
| 1.500 l | 210 | 125 | 70 | 32 | 65 | 82 | 200050 |
| 3.000 l | 245 | 210 | 75 | 32 | 65 | 180 | 200051 |
| 5.000 l | 289 | 230 | 100 | 32 | 65 | 250 | 200052 |
| 7.500 l | 360 | 225 | 125 | 32 | 65 | 360 | 200053 |

Connection of several tanks on request



Dimensions see table

Technical data

| | |
|---|---------------------|
| Max. soil cover: | 120 cm |
| Soil height for vehicle loading: | 70 – 100 cm |
| Groundwater stability: | Up to tank shoulder |
| Soil height for groundwater installation: | 70 – 120 cm |
| Connections: | 4 x DN110 |



Cristall underground tank



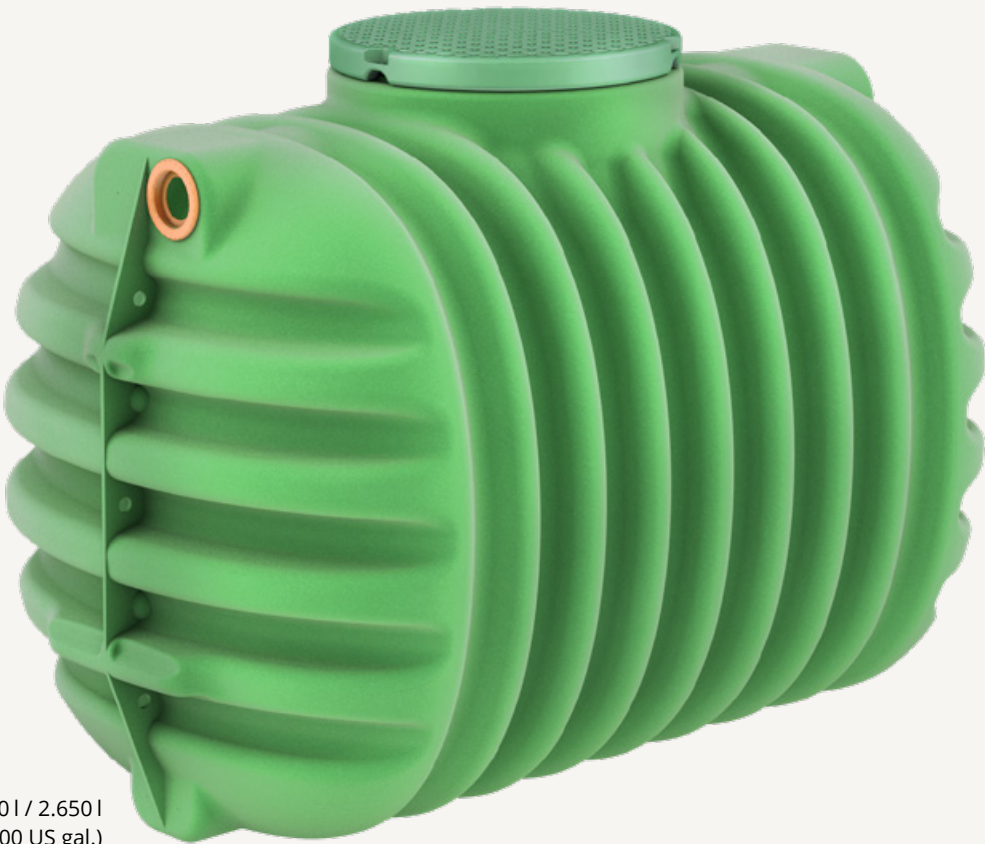
- ✓ Easy transport due to low weight (65 kg for the 1.600l-tank)
- ✓ Pre-assembled lip seals for quick and easy assembly
- ✓ Groundwater stable up to 50 cm from the tank bottom
- ✓ Includes double-walled PE lid

The Cristall underground tank with a tank dome Ø of 60 cm (24") and 1 x DN110 (4") lip seal, including child-proof PE cover with double walls, in green color.

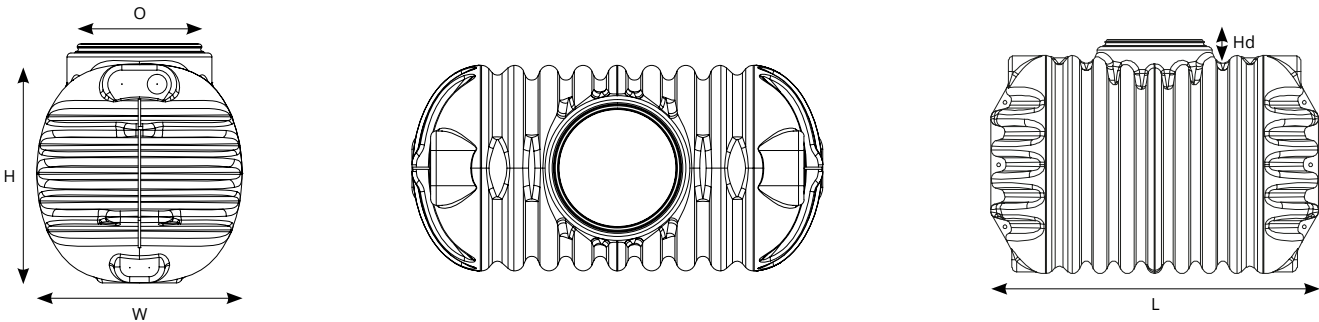
NOTE
Installation only with telescopic dome shaft Cristall.
[>> Details page 74](#)

| Volume [l] | Length L [cm] | Width W [cm] | Height to tank shoulder H [cm] | Height of tank dome Hd [cm] | Ø tank opening O [cm] | Weight [kg] | Item no. |
|------------|---------------|--------------|--------------------------------|-----------------------------|-----------------------|-------------|----------|
| 1.600 l | 210 | 105 | 112 | 10 | 60 | 65 | 200010 |
| 2.650 l | 210 | 130 | 140 | 10 | 60 | 100 | 200011 |

Connection of several tanks on request



1.600 l / 2.650 l
(423 / 700 US gal.)



Dimensions see table

Technical Data

| | |
|---|------------------------------|
| Max. soil cover: | 100 cm |
| Soil height for vehicle loading: | 80 – 100 cm |
| Groundwater stability: | up to 50 cm from tank bottom |
| Soil height for groundwater installation: | 80 – 100 cm |
| Connection: | 1 x DN110 |



TIP
Dimensional drawings at
www.garantia.com/en/downloads



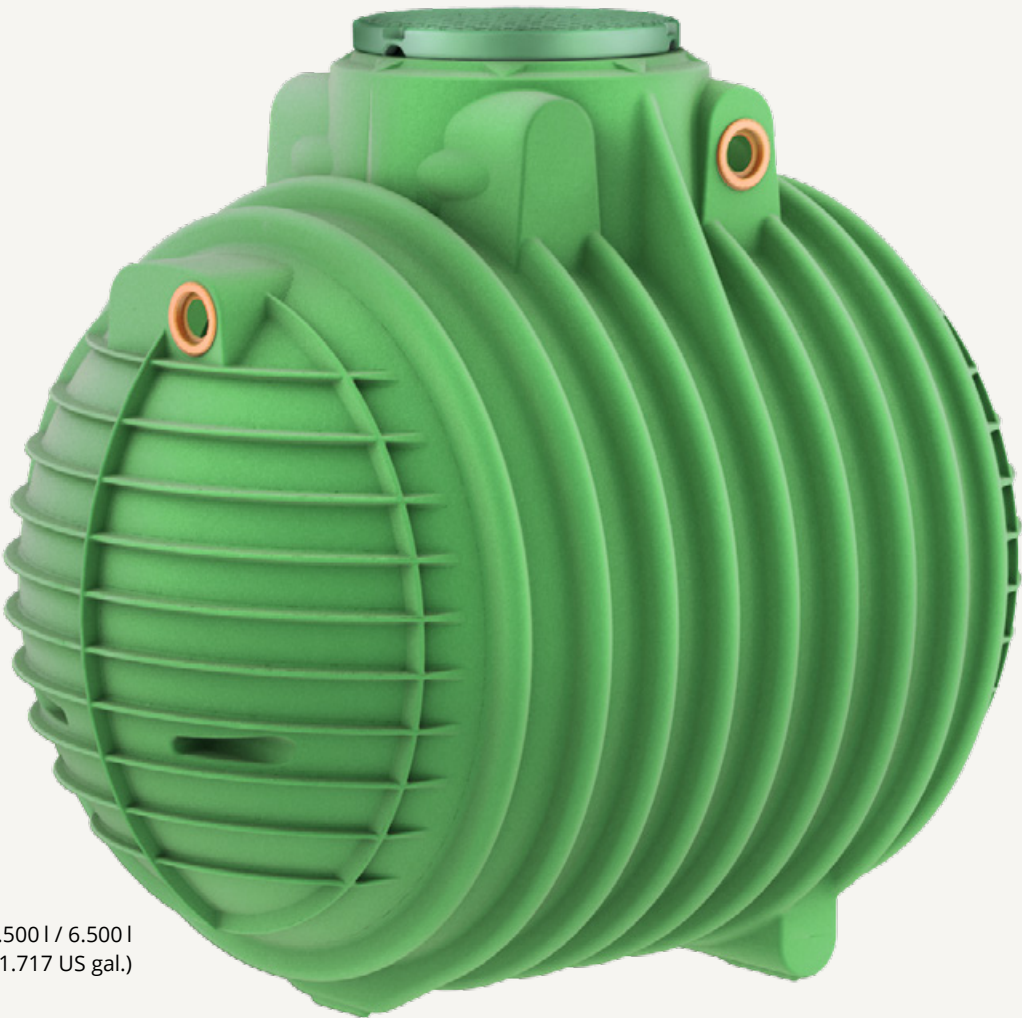
Columbus underground tank



- ✓ Best solution for high groundwater installations
- ✓ Pre-assembled lip seals for quick and easy assembly
- ✓ Groundwater stable up to 80 cm from the tank bottom
- ✓ Includes double-walled PE lid

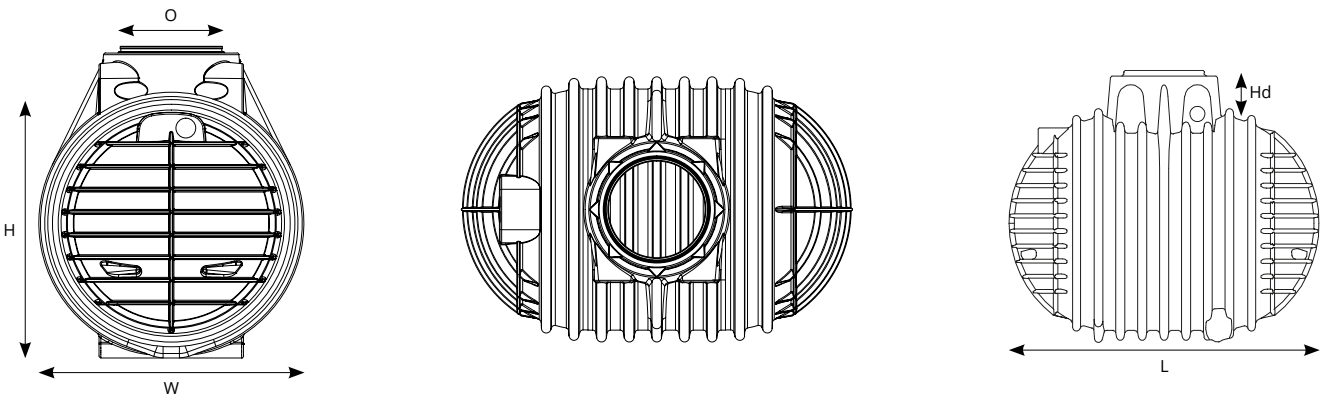
The Columbus underground tank with a tank dome Ø of 60 cm (24") and 4 x DN110 (4") lip seals, including child-proof PE cover with double walls, in green color.

NOTE
Telescopic dome shaft Columbus for frost-proof installation.
[>> Details page 74](#)



| Volume [l] | Length L [cm] | Width W [cm] | Height to tank shoulder H [cm] | Height of tank dome Hd [cm] | Ø tank opening O [cm] | Weight [kg] | Item no. |
|------------|---------------|--------------|--------------------------------|-----------------------------|-----------------------|-------------|----------|
| 3.700 l | 244 | 165 | 155 | 37 | 60 | 160 | 200020 |
| 4.500 l | 244 | 184 | 174 | 37 | 60 | 190 | 200021 |
| 6.500 l | 268 | 202 | 202 | 37 | 60 | 300 | 200022 |

Connection of several tanks on request



Dimensions see table

Technical Data

| | |
|---|------------------------------|
| Max. soil cover: | 100 cm |
| Soil height for vehicle loading: | 80 – 100 cm |
| Groundwater stability: | Up to 80 cm from tank bottom |
| Soil height for groundwater installation: | 80 – 100 cm |
| Connections: | 4 x DN110 |

3.700 l / 4.500 l / 6.500 l
(977 / 1.189 / 1.717 US gal.)

TIP
Dimensional drawings at
www.garantia.com/en/downloads



Telescopic dome shafts & covers



Telescopic dome shaft
Cristall

The Telescopic dome shaft Cristall comes with three pre-assembled DN110 lip seals and can be shortened in the range of 47 to 95 cm. The telescope can also be tilted by 5°.

This allows you to comfortably adapt your tank cover to your terrain surface with millimetre precision.

| ø inside [cm] | ø outside [cm] | Height [cm] | Weight [kg] | Item no. |
|---------------|----------------|-------------|-------------|----------|
| 62 | 75 | 47 – 95 | 14 | 202058 |

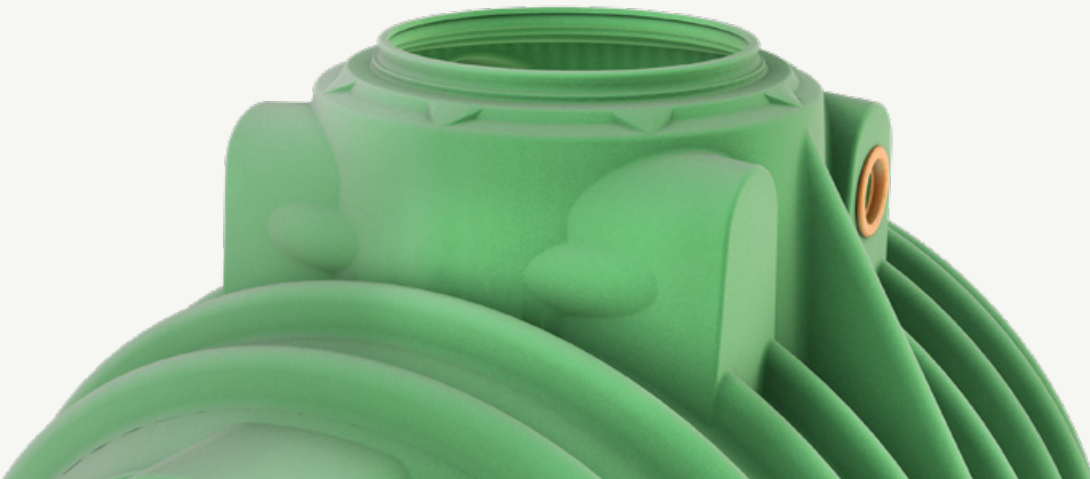
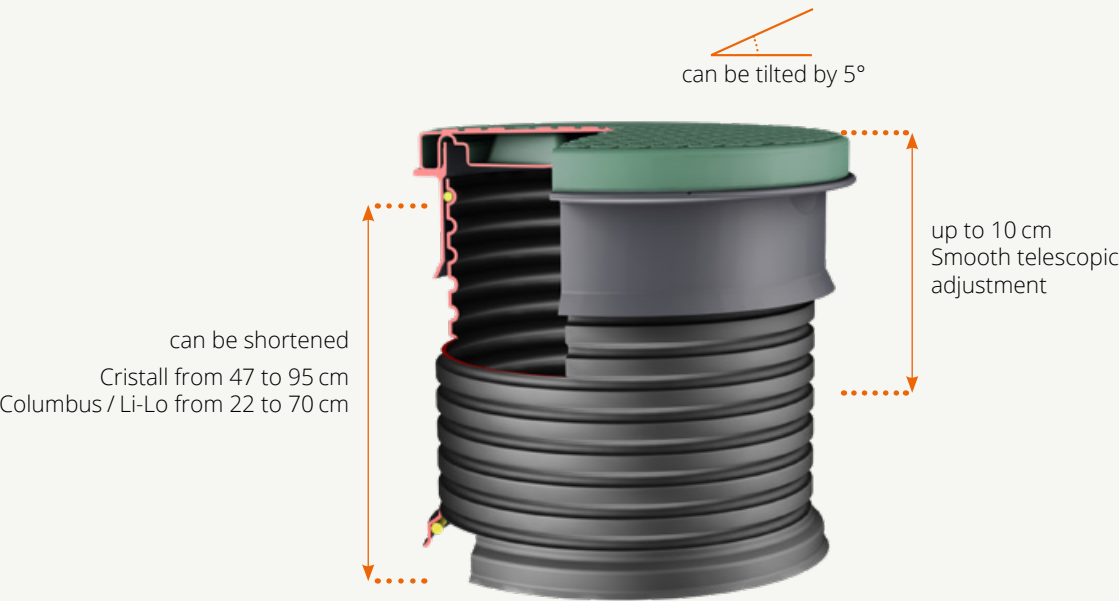


Telescopic dome shaft
Columbus / Li-Lo

The Telescopic dome shaft Columbus / Li-Lo can be shortened in the range of 22 to 70 cm. The telescope can also be tilted by 5°.

This allows you to comfortably adapt your tank cover to your terrain surface with millimetre precision.

| ø inside [cm] | ø outside [cm] | Height [cm] | Weight [kg] | Item no. |
|---------------|----------------|-------------|-------------|----------|
| 62 | 75 | 22 – 70 | 11 | 202057 |



Included in the scope of supply of the GARANTIA underground tanks

Green cover for
pedestrian loading

Double-walled plastic cover, childproof lock. The short-term load of the pedestrian PE cover is max. 150 kg, the long-term surface load max. 50 kg.



| ø [cm] | Height [cm] | Weight [kg] | Item no. |
|--------|-------------|-------------|--|
| 73 | 8 | 6 | included in the scope of delivery of the underground tanks (p. 68, 70, 72) |



Optional

Tank cover for vehicle loading

Max. axle load 2.2 t
Max. vehicle weight 3.5 t

Car module consisting of:

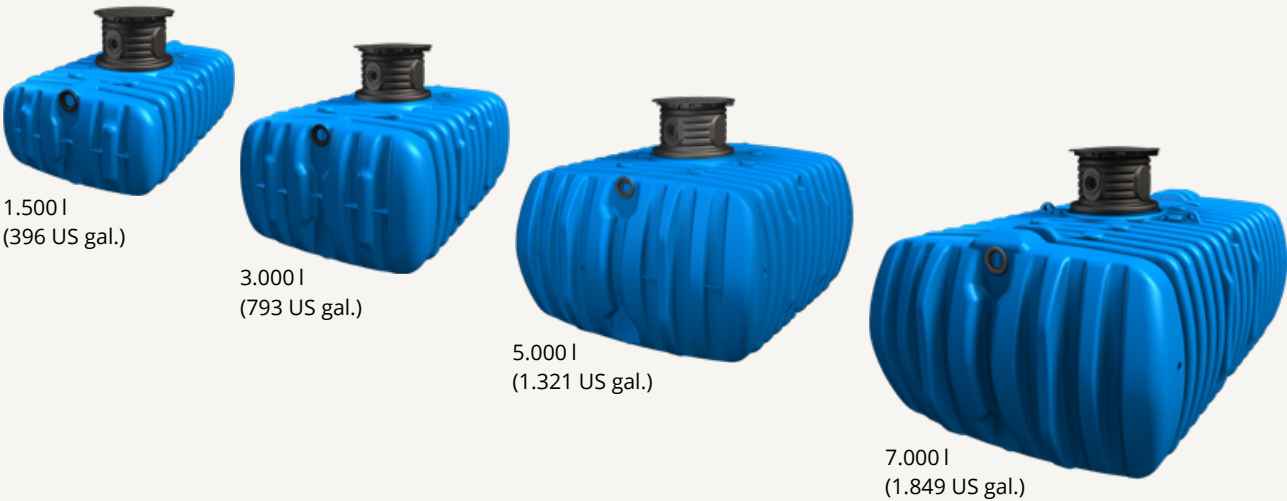
- Cast iron cover
- Cast iron frame



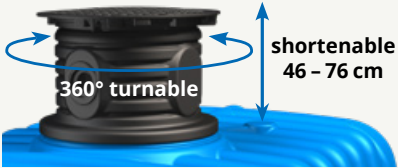
| ø inside [cm] | ø outside [cm] | Height [cm] | Weight [kg] | Item no. |
|---------------|----------------|-------------|-------------|----------|
| 65 | 72.5 | 7 | 61 | 202059 |

4rain | Flat underground tank

- ✓ Easy transport thanks to its low weight (80 kg for the 1.500l-tank)
- ✓ Extremely little excavation required
- ✓ Quick and easy assembly
- ✓ Ready for connection through pre-assembled lip seals
- ✓ Including tank dome system for frost-proof installation
- ✓ Tank cover: childproof and pedestrian loading

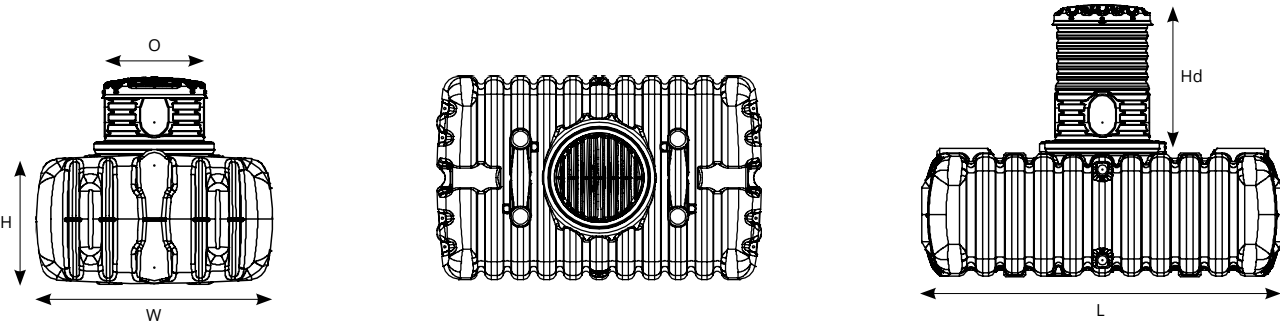


The 4rain Flat underground tank with included tank dome and child-proof cover, the tank dome can be rotated 360° and shortened in height for variable and easy installation.



| Volume [l] | Length L [cm] | Width W [cm] | Height to tank shoulder H [cm] | Height of tank dome Hd [cm] | Ø tank opening O [cm] | Weight [kg] | Item no. |
|------------|---------------|--------------|--------------------------------|-----------------------------|-----------------------|-------------|----------|
| 1.500 l | 210 | 132 | 75 | 76 | 53 | 80 | 295120 |
| 3.000 l | 245 | 160 | 107 | 76 | 53 | 115 | 295115 |
| 5.000 l | 245 | 210 | 134 | 76 | 53 | 240 | 295126 |
| 7.000 l | 330 | 210 | 134 | 76 | 53 | 311 | 295170 |

Connection of several tanks on request



Dimensions see table

Technical data

| | |
|------------------|--------------------------|
| Max. soil cover: | 76 cm |
| Load capacity: | Pedestrian loading, only |
| Connections: | 3 x DN110 |

4rain | Modularis underground tank



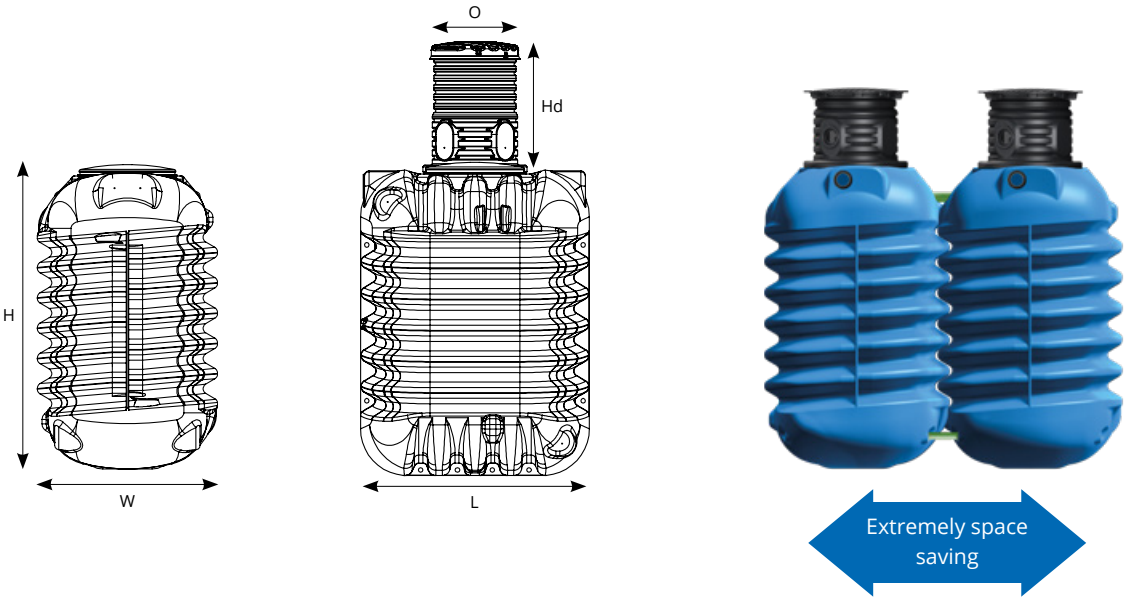
- ✓ Easy transport thanks to its low weight (87 kg)
- ✓ Extremely space saving – only 1,8m² of base area for 2.500l
- ✓ Quick and easy assembly
- ✓ Ready for connection through pre-assembled lip seals
- ✓ Including tank dome system for frost-proof installation
- ✓ Tank cover: childproof and pedestrian loading

The 4rain Modularis underground tank with included tank dome and child-proof cover, the tank dome can be rotated 360° and shortened in height for variable and easy installation.



| Volume [l] | Length L [cm] | Width W [cm] | Height to tank shoulder H [cm] | Height of tank dome Hd [cm] | Ø tank opening O [cm] | Weight [kg] | Item no. |
|------------|---------------|--------------|--------------------------------|-----------------------------|-----------------------|-------------|----------|
| 2.500 l | 147 | 119 | 201 | 76 | 53 | 87 | 295022 |

Connection of several tanks on request



Dimensions see table

| Technical data | |
|------------------|--------------------------|
| Max. soil cover: | 76 cm |
| Load capacity: | Pedestrian loading, only |
| Connections: | 3 x DN110 |

4rain | Compact underground tank

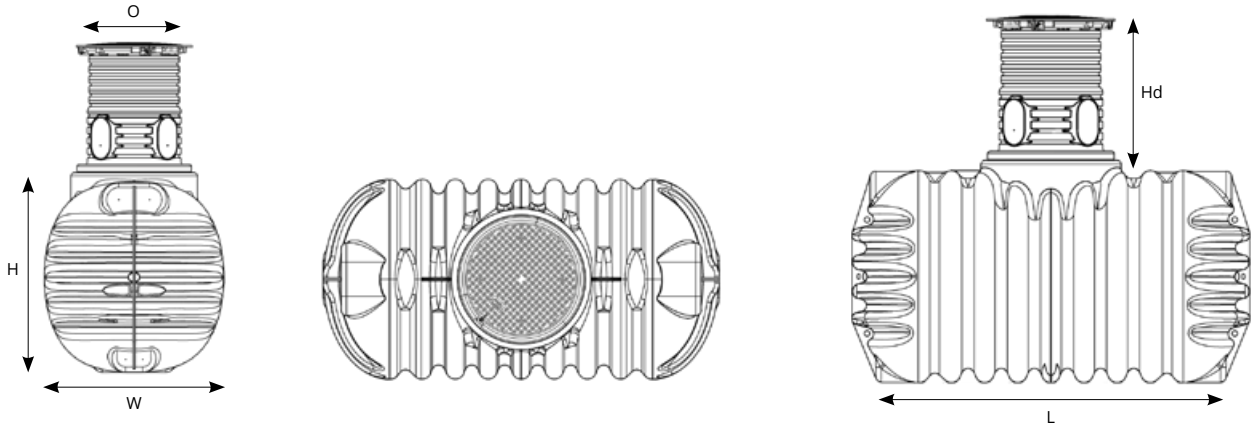
- ✓ Easy transport thanks to its low weight (65 kg for the 1.600l-tank)
- ✓ Compact tank design, low installation costs
- ✓ Quick and easy assembly
- ✓ Ready for connection through pre-assembled lip seals
- ✓ Including tank dome system for frost-proof installation
- ✓ Tank cover: childproof and pedestrian loading

The 4rain Compact underground tank with included tank dome and child-proof cover, the tank dome can be rotated 360° and shortened in height for variable and easy installation.



| Volume [l] | Length L [cm] | Width W [cm] | Height to tank shoulder H [cm] | Height of tank dome Hd [cm] | Ø tank opening O [cm] | Weight [kg] | Item no. |
|------------|---------------|--------------|--------------------------------|-----------------------------|-----------------------|-------------|----------|
| 1.600 l | 210 | 105 | 118 | 76 | 53 | 65 | 295300 |
| 2.650 l | 210 | 130 | 146 | 76 | 53 | 100 | 295301 |

Connection of several tanks on request



Dimensions see table

Technical data

| | |
|------------------|--------------------------|
| Max. soil cover: | 76 cm |
| Load capacity: | Pedestrian loading, only |
| Connections: | 3 x DN110 |



4rain | Promo underground tank



- ✓ Highest stability thanks to intelligent tank-geometry
- ✓ Compact tank design, simple installation
- ✓ Quick and easy assembly
- ✓ Ready for connection through pre-assembled lip seals
- ✓ Including tank dome system for frost-proof installation
- ✓ Tank cover: childproof and pedestrian loading

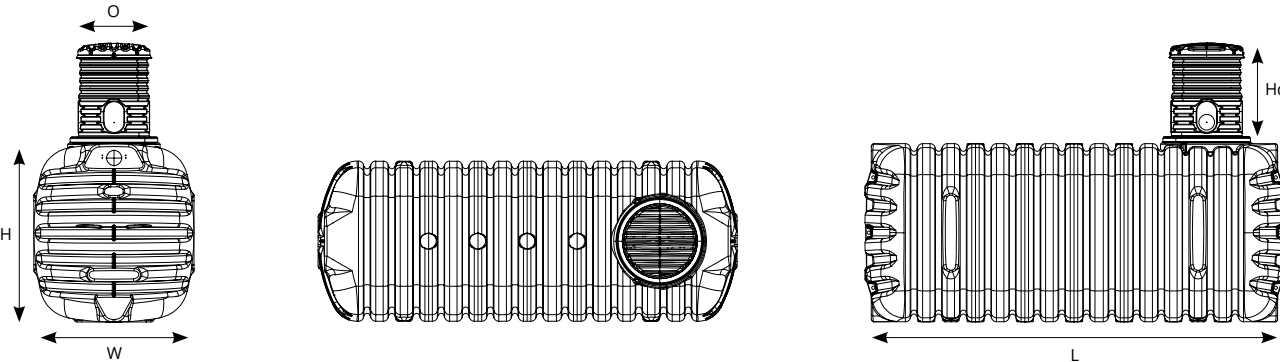
The 4rain Promo underground tank with included tank dome and child-proof cover, the tank dome can be rotated 360° and shortened in height for variable and easy installation.

| Volume [l] | Length L [cm] | Width W [cm] | Height to tank shoulder H [cm] | Height of tank dome Hd [cm] | Ø tank opening O [cm] | Weight [kg] | Item no. |
|------------|---------------|--------------|--------------------------------|-----------------------------|-----------------------|-------------|----------|
| 4.100 l | 325 | 124 | 138 | 78 | 53 | 143 | 295205 |

Connection of several tanks on request



4.100 l
(1.083 US gal.)




Dimensions see table

| Technical data | |
|------------------|--------------------------|
| Max. soil cover: | 78 cm |
| Load capacity: | Pedestrian loading, only |
| Connections: | 3 x DN110 |

4rain | Mono underground tank

- ✓ Monolithic tank-design
- ✓ Quick and easy assembly
- ✓ Ready for connection through pre-assembled lip seals
- ✓ Including moulded tank dome with prefitted sealings ready for connection
- ✓ Tank cover: childproof and pedestrian loading

 The 4rain Mono underground tank with included tank dome and child-proof cover, tank system sealed against soakage.



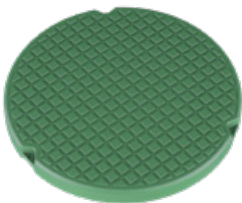
| Volume [l] | Length L [cm] | Width W [cm] | Height to tank shoulder H [cm] | Height of tank dome Hd [cm] | Ø tank opening O [cm] | Weight [kg] | Item no. |
|------------|---------------|--------------|--------------------------------|-----------------------------|-----------------------|-------------|----------|
| 3.000 l | 235 | 140 | 144 | 46 | 60 | 150 | 295005 |
| 4.000 l | 242 | 150 | 150 | 55 | 60 | 175 | 295003 |
| 5.000 l | 245 | 183 | 183 | 34 | 60 | 230 | 295004 |
| 6.800 l | 245 | 200 | 208 | 32 | 60 | 290 | 295020 |

Connection of several tanks on request

Technical data

| | |
|------------------|--------------------------|
| Max. soil cover: | 100 cm |
| Load capacity: | Pedestrian loading, only |
| Connections: | 4 x DN110 |

Telescopic dome shaft



Green cover for pedestrian loading

Double-walled plastic cover, childproof lock. The short-term load of the pedestrian PE cover is max. 150 kg, the long-term surface load max. 50 kg.

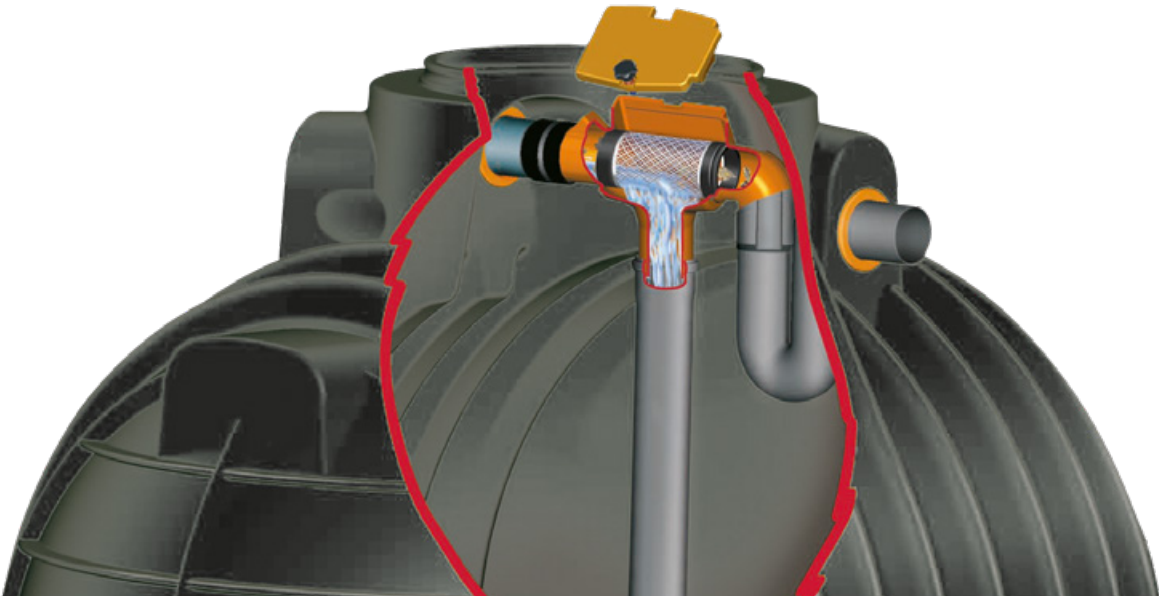
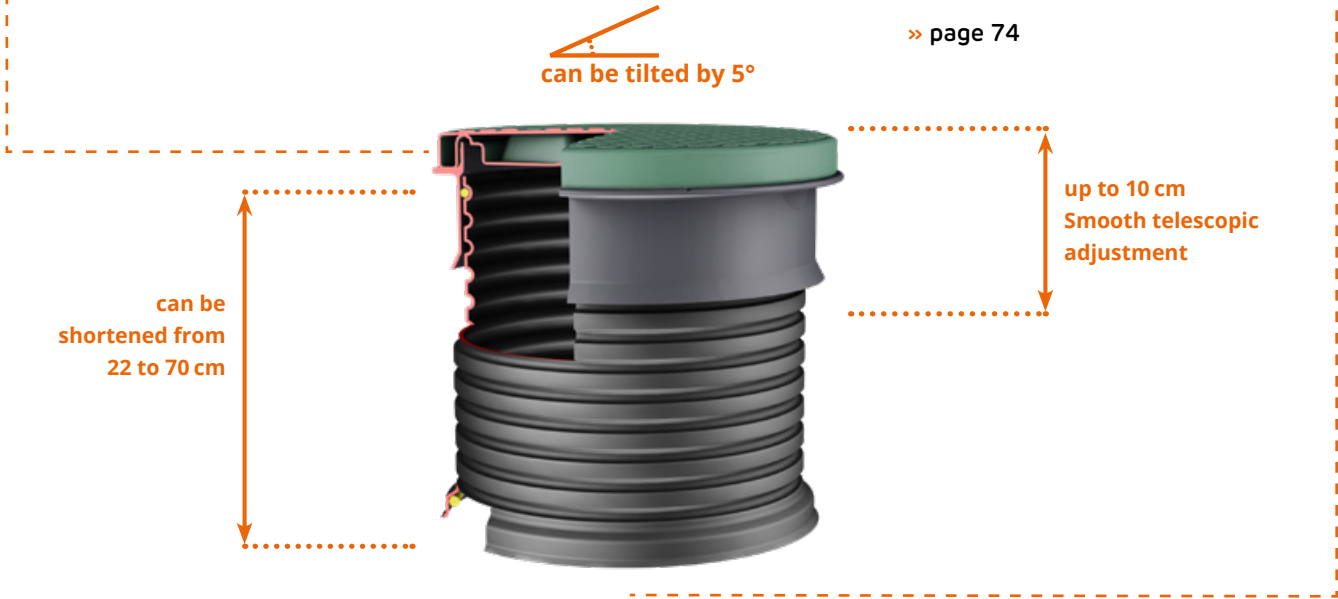
» page 74



Telescopic dome shaft

The telescopic dome shaft (Ø 62 cm) can be shortened and is suitable for frost-proof installation. Also, it can be tilted by 5°. Hence you can adjust your tank cover to your terrain, conveniently and to millimetre precision.

» page 74



Herkules tank



- ✓ One tank consists of two half shells that are identical in construction
- ✓ Multi-purpose: overground, underground and basement installations are possible
- ✓ Quick and easy assembly of the two half-shells
- ✓ One half-shell fits through every standard door (≥80 cm) and has a weight of only 30 kg, each
- ✓ Easy and inexpensive transport thanks to its low weight

Can be used in 3 different ways



Overground
The Herkules tank is easy to install in your garden. Combined with our down-pipe filters it's a perfect way to harvest rainwater.



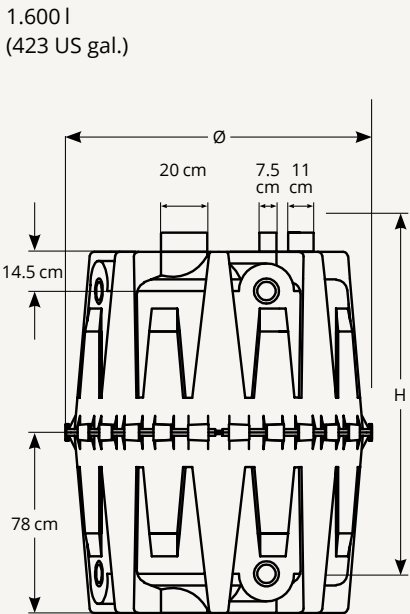
Underground
Combined with the available accessories the Herkules tank can also be installed underground. The tank is groundwater stable up to the top edge of the tank.



As a cellar tank
Due to its size the Herkules tank fits through a standard doorway (≥ 80 cm). Therefore: ideal for basement installation.



Herkules tank 1.600 l
Item no. 320001



| Volume [l] | Qty. of tanks | ø [cm] | Height H [cm] | Weight [kg] | Item no. |
|------------|---------------|--------|---------------|-------------|----------|
| 1.600 l | 1 | 135 | 160 | 60 | 320001 |

*incl. DN110 extension set (connection pipes to be provided on site!)

Technical data

| | |
|------------------|---|
| Max. soil cover: | 100 cm |
| Load capacity: | Pedestrian loading, only |
| Connections: | 2 x DN75, DN110 and DN200 as well as lateral mounting surfaces 4 x DN75 and 4 x DN110 |

NOTE
Moulded sockets
2 x DN75, 2 x DN110 and 2 x DN200 suitable for standard HT/KG pipes.

TIP
Brass outlet tap with tank screw connection
>> Details see page 58

Regendieb Pro
>> Details see page 57

TIP
External water socket
>> Details page 97



Internal filters

Filter basket

(compatible with all underground tanks, shown from page 70 to 84)

- For hanging into the tank dome
- Fine-mesh filtration (ø 0.035 cm)
- Also ideal for retrofitting in existing systems
- Crossbar can be adjusted between 47 – 69 cm
- Roof area max. 200 m²
- 100 % water yield

Scope of supply

- 1 Filter basket
- 2 Chain held by crossbar



| ø Top [cm] | ø Bottom [cm] | Height [cm] | Weight [kg] | Item no. |
|------------|---------------|-------------|-------------|----------|
| 41 | 33 | 17.5 | 1.7 | 202044 |

Self-cleaning filters

If required, the Columbus / Li-Lo / Mono and Cristall underground tanks can be equipped with a self-cleaning filter technology, called Supra. With the Supra filter, you achieve a water quality that allows you to use the rainwater in-house.

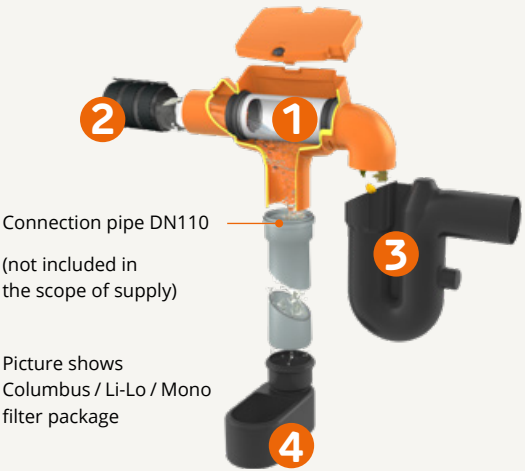
- Max. roof area 350 m²
- Self-cleaning filter with stainless steel filter insert
- Mesh size 0.05 cm
- Over 95 % water yield

Filter package for Columbus / Li-Lo / Mono

Item no. 202556

Scope of supply

- 1 Supra filter internal with curved outlet
- 2 Patented quick-connection sleeve for pipe-to-pipe connection
- 3 Overflow siphon with small-animal protection
- 4 Steady inflow pot

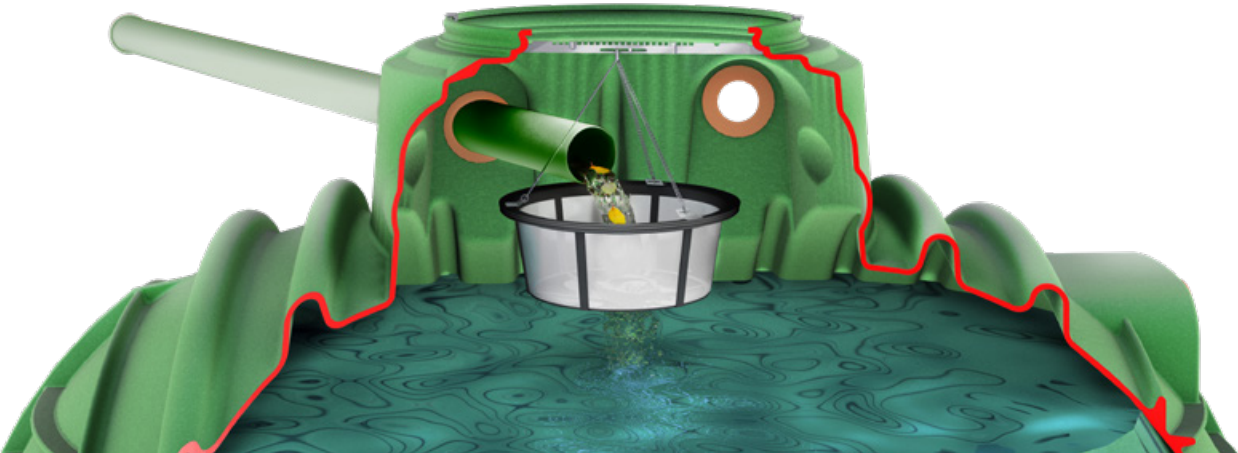
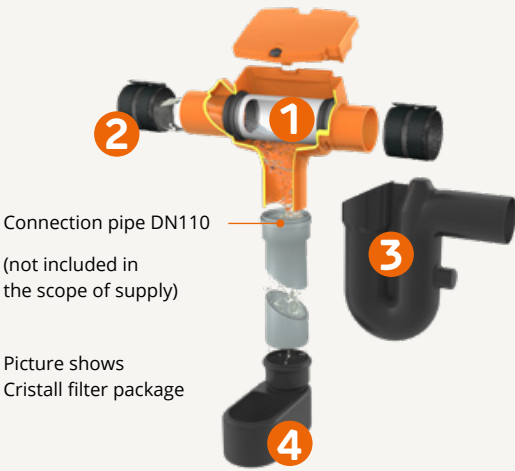


Filter package for Cristall

Item no. 202569

Scope of supply

- 1 Supra filter internal with straight outlet
- 2 Patented quick-connection sleeve for pipe-to-pipe connection
- 3 Overflow siphon with small-animal protection
- 4 Steady inflow pot



External filter

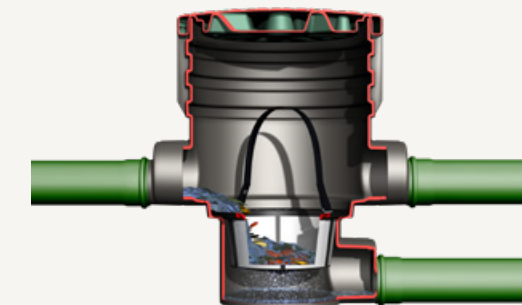


External underground fine filter

Thoroughly cleans the rainwater of impurities. With a large, removable filter basket, incl. lifting handle. Fine-mesh filtration (ø 0.035 cm). 100 % water yield. DN110 / DN160 connections.

Suitable for domestic use or as a pre-filter for infiltration or pond systems. Roof area max. 500 m², height: 80 cm, can be shortened to 55 cm by 12.5 cm, each.

Item no. 340002



Rainwater storage tanks

External filter pot

For ground-level installation in front of the tank. Suitable for garden irrigation or as a pre-filter for infiltration or pond systems.

Connection: DN110
Max. roof area 175 m²
Dimensions: ø 50 cm, Height: 34 cm

Item no. 340003



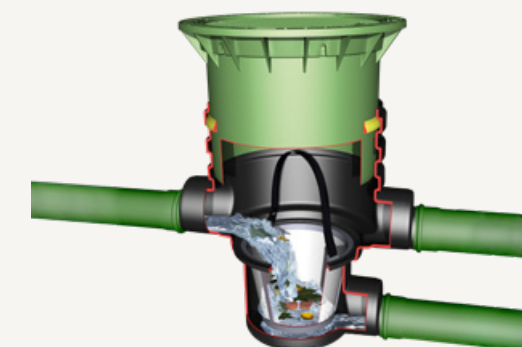
Rainwater underground tanks

External universal filter 3, pedestrian loading

Thoroughly cleans the rainwater of impurities. With a large, removable filter basket, incl. lifting handle. Fine-mesh filtration (ø 0.035 cm). 100 % water yield. DN110 / DN160 connections.

Suitable for domestic use or as a pre-filter for infiltration or pond systems. Roof area max. 500 m², height: 105 cm, can be shortened to 50 cm by 7.5 cm, each.

Item no. 340020



Infiltration

Retention

Garden packages

Garden-Jet pump package

The flexible solution

- ❶ Suction kit with 12.5 m suction hose 2.5 cm (1")
- ❷ External water socket
- ❸ Garden-Jet Pump 700

Item no. 202562



Garden-Comfort pump package

Extremely easy to use thanks to automatic pump control

Item no. 202561



❶ Submersible stainless steel pump NiRo 30

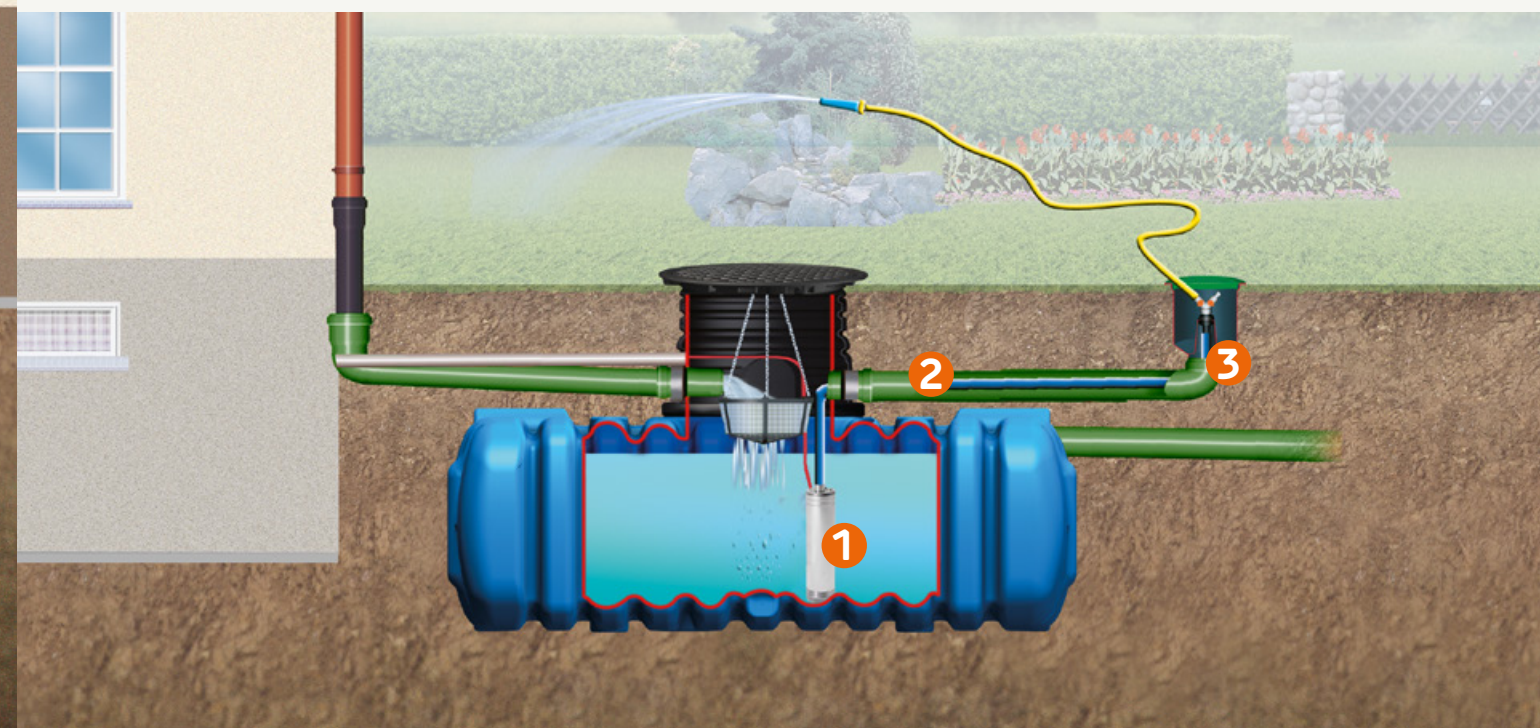
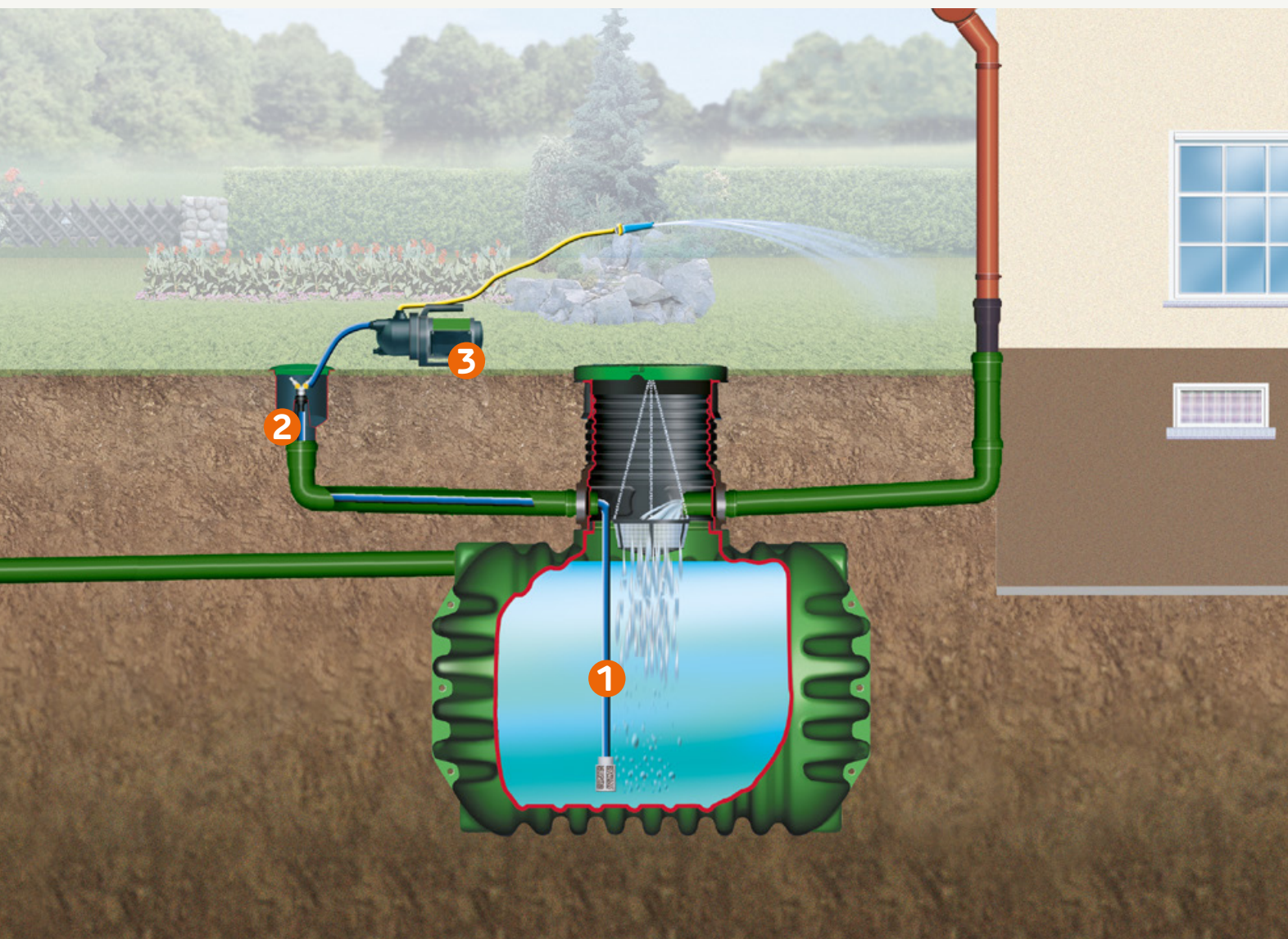
- With automatic start-stop mechanism
- Motor rating 0.85 kW
- Max. delivery height 32 m
- Max. pressure 3.2 bar
- Max. delivery volume 5.100 l/h

❷ Pressure hose

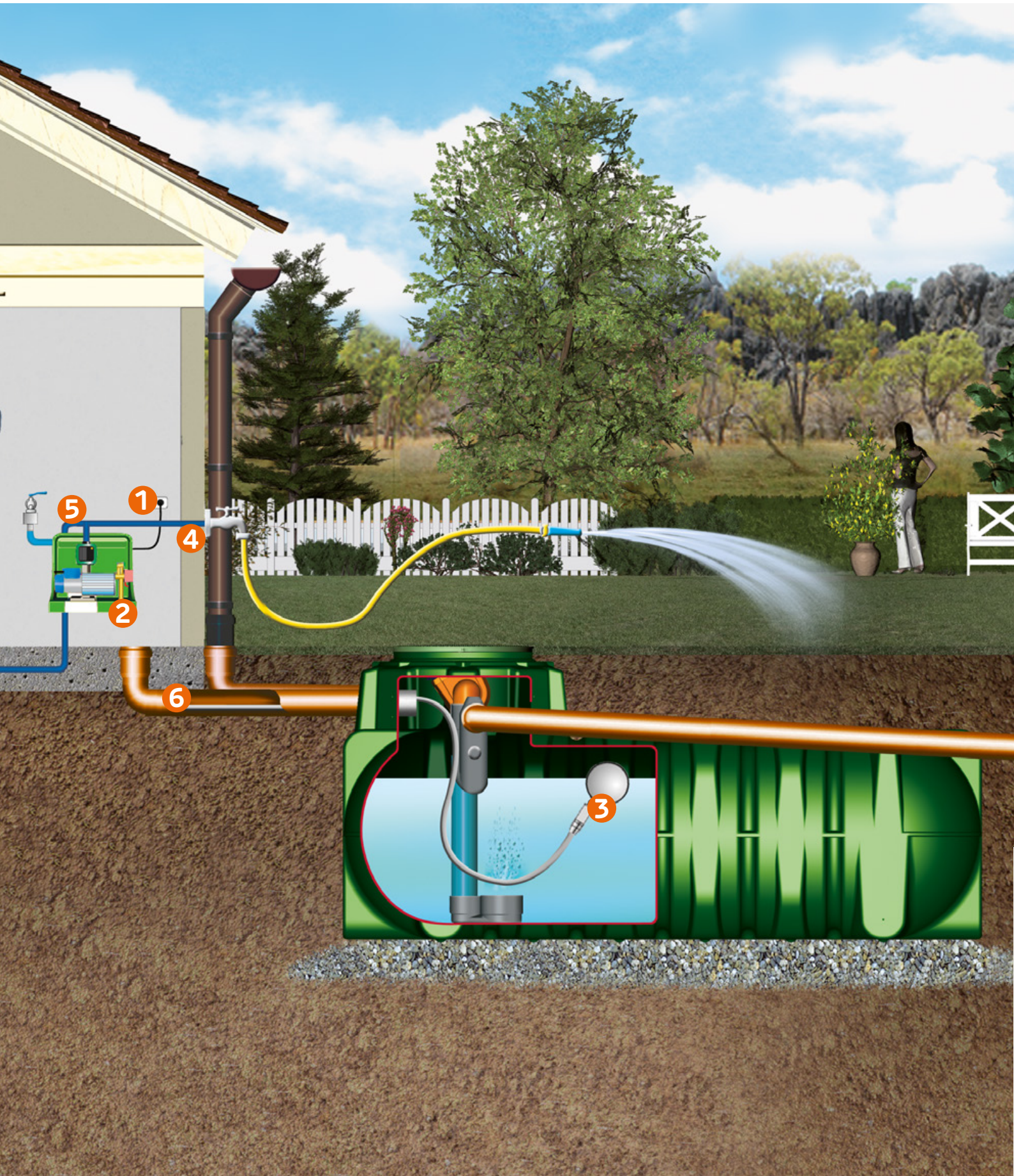
- 10 m pressure hose 2.5 cm (1")

❸ External water socket

- For the convenient extraction of rainwater in the garden
- Incl. 2-way valve for commercial hose couplings
- Water supply: 2.5 cm (1") hose connection



House package **PRO**line



1 Digital level indicator

- Shows the water level in the tank in percentage

4 DN110 wall duct

- For the safe routing of supply lines through a wall
- Including lead-through options of
 - 1 x Ø 0.8 cm
 - 1 x Ø 1.2 cm
 - 1 x Ø 4.1 cm
- Ø 10 cm wall duct
- Use, only with non-pressurised water

2 Drinking water feeding module

- Pre-assembled control unit system
- Fully automatic control of your rainwater harvesting system
- All appliances (e.g. toilet, washing machine) are supplied automatically
- When the tank is empty, the required amount of drinking water is drawn via the integrated drinking water feeding container and supplied directly to the point of consumption
- Ideal for self-installation

3 Floating suction fitting

- Draws water from just below the water surface – where it is the cleanest
- Float ball
- Fine filter
- Ø 2.5 cm (1") non-return valve

5 Labelling set

- To label rainwater lines

6 Suction hose

- 12.5 m suction hose 2.5 cm (1")

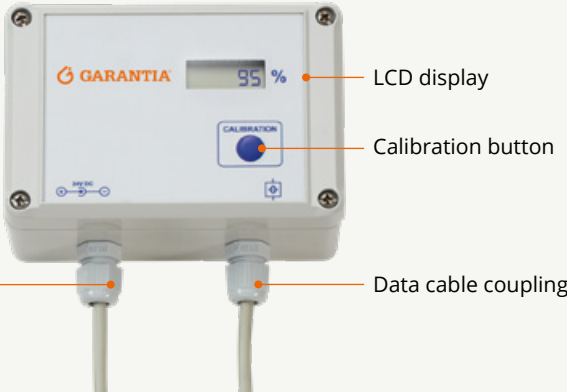
Technical data

| | |
|------------------------|---------------|
| Operating voltage | 24 Volt |
| Power consumption | 0,9 Watt |
| Output voltage | 12 Volt |
| Dimensions (L x B x T) | 12 x 8 x 6 cm |
| Degree of protection | IP 54 |

Item no. 202576

Scope of supply

- Indicator
- Sensor
- Sensor cable (approx. 3 m) and stainless steel weight
- Data cable (approx. 20 m)
- Mains connection



Accessories

Drinking water feeding module

Controls supply of drinking water into the tank, when the rainwater tank is empty

Item no. 202039

Advantages

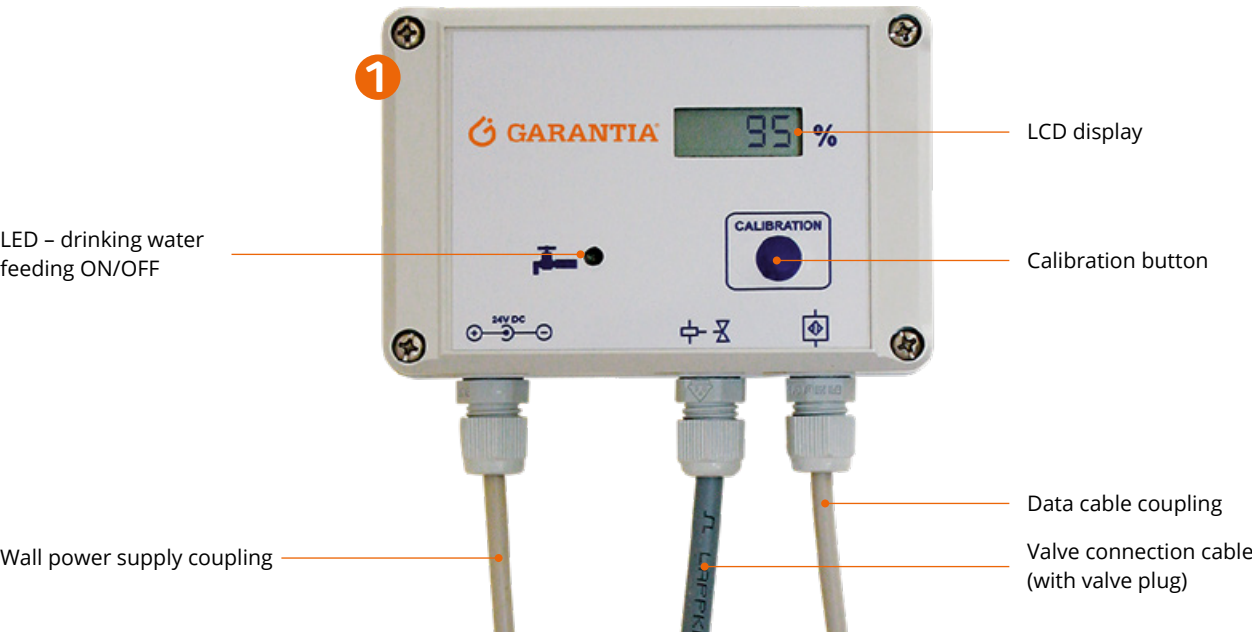
- Level indication in 1 % steps
- Calibration routine
- Constant monitoring of the sensor electronics
- Fixed switching point for the drinking water feeding

- 1 Drinking water feeding module
- 2 Mains connection
- 3 Sensor cable (approx. 3 m) and stainless steel weight
- 4 Data cable (approx. 20 m)
- 5 Measurement box
- 6 Solenoid valve with DIN 1988 pipe interruption

External water socket

For the convenient extraction of rain-water in the garden. For jet pump and submersible pump incl. 2-way valve and 2.5 cm (1") hose connection

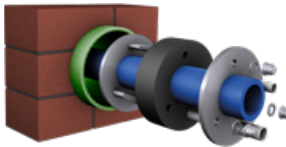
Item no. 202060



Floating water extraction

- Floating intake fitted with fine filter for the cleanest water extraction just below the water surface
- Includes backflow prevention, floating ball with eyelet and ring
- Diameter: 2.5 cm (1")

Item no. 330054



Wall duct DN110

- For the safe routing of supply lines through walls
- Including lead-through options of 1 x Ø 0.8 cm, Ø 1.2 cm and Ø 4.1 cm each
- Diameter: 10 cm
- Only use, when there is no water pressure

Item no. 331002



Overflow siphon

- Ensures that floating particles are removed from the tank. Includes a rodent guard made of stainless steel

Item no. 330108



Labelling set

- For marking rainwater pipes

Item no. 330122



Suction hose

- Grey with reinforcing ribs
- Length: 12.5 m
- Diameter: 2.5 cm (1")

Item no. 934057



Garden-Comfort complete packages

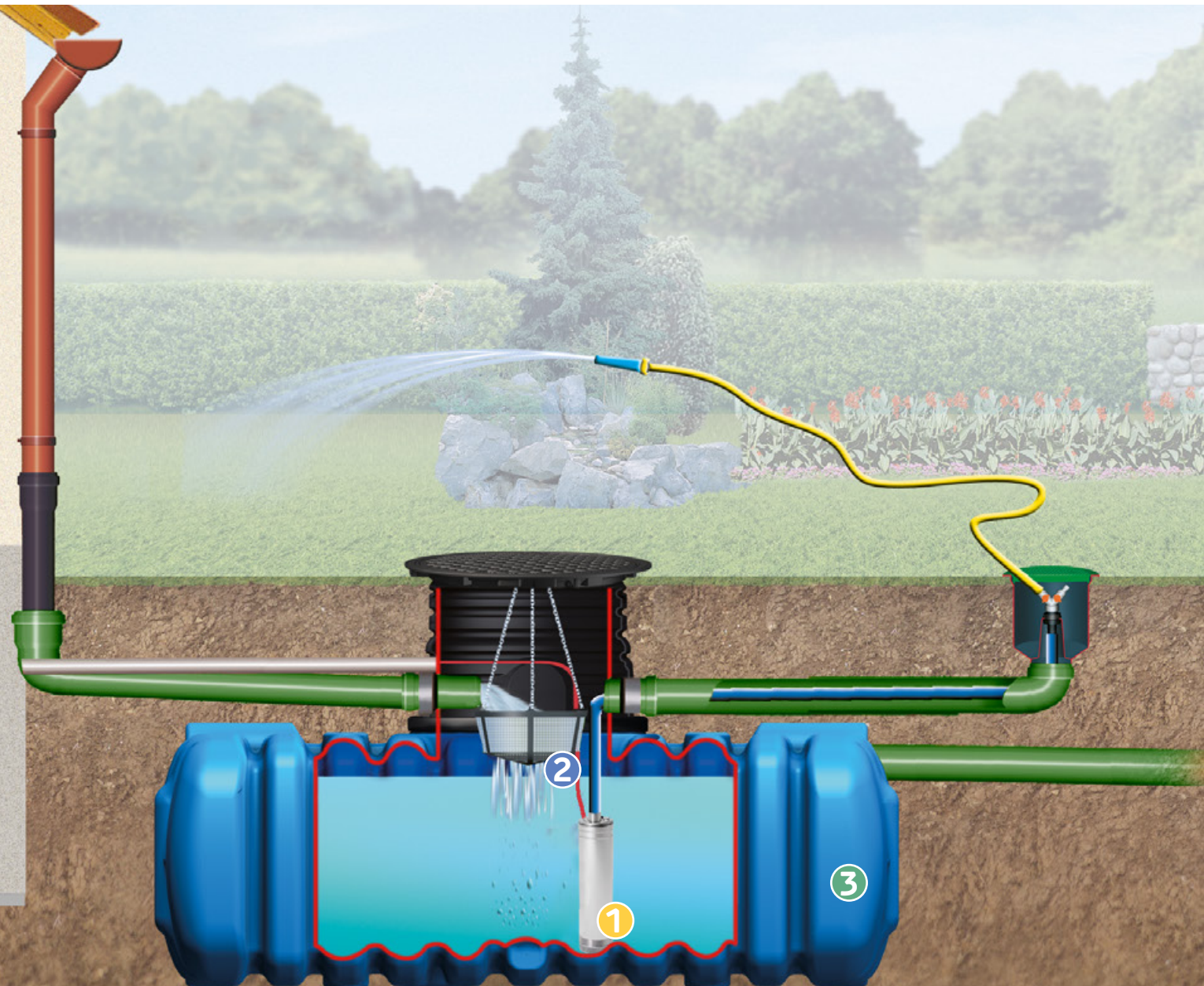
Complete packages on Garden-Comfort,
available on request for all our underground tanks.

The below-shown image is an example.
Complete packages include the following three
modules:

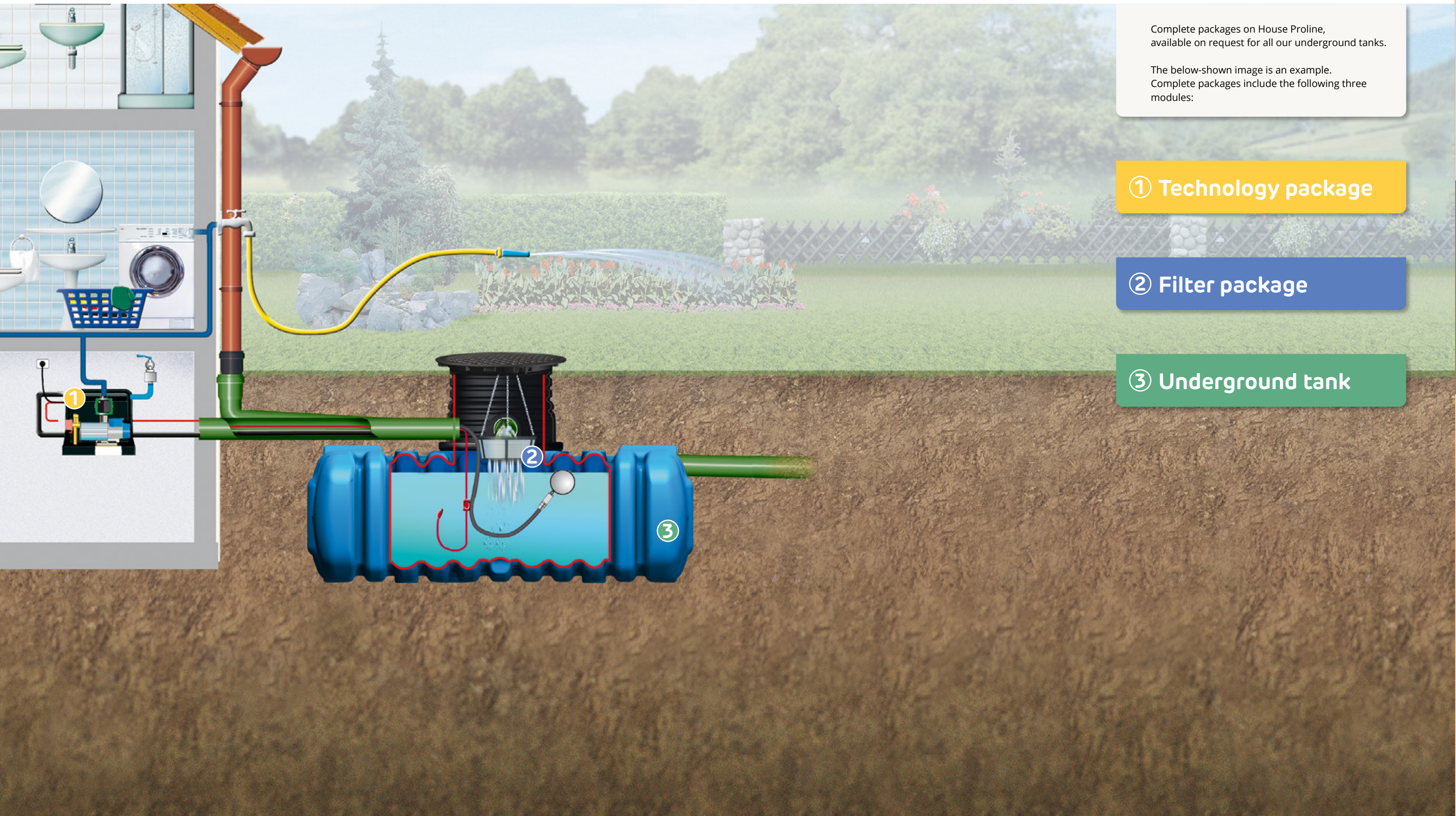
① Technology package

② Filter package

③ Underground tank



House package Proline complete packages



Complete packages on House Proline, available on request for all our underground tanks.

The below-shown image is an example. Complete packages include the following three modules:

① Technology package

② Filter package

③ Underground tank

Water springs

Granite water spring

Base 25 x 25 cm | **Column** 13 x 13 cm
Height 100 cm | **Weight** 5 kg

dark granite item no. 356025
light granite item no. 356026

Wood water spring

Base 25 x 25 cm | **Column** 13 x 13 cm
Height 100 cm | **Weight** 5 kg

darkwood item no. 356030
lightwood item no. 356031

Rondo water spring

Base 19 cm | **Column** 12 cm
Height 90 cm | **Weight** 3 kg

stone grey item no. 356021



Stone fountain

Stone fountain Venezia

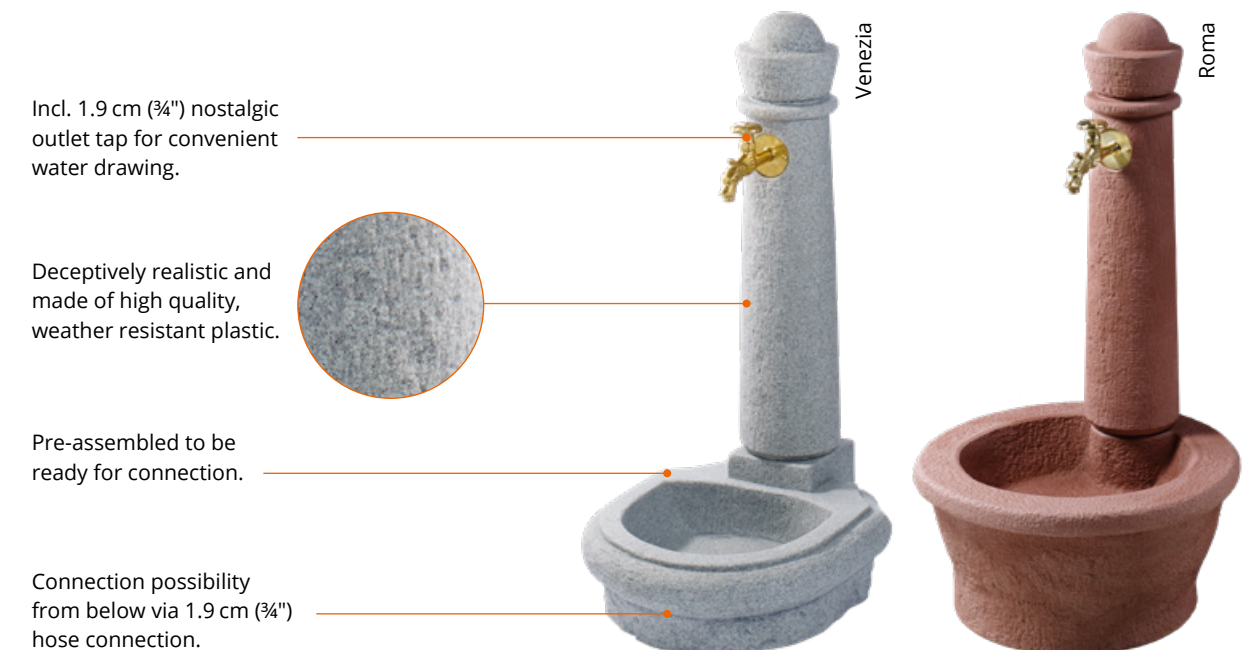
Width 44 cm | **Depth** 52 cm
Height 90 cm | **Height basin** 15 cm
Weight 7 kg

light granite item no. 356100
redstone item no. 356102

Stone fountain Roma

Width 54 cm | **Depth** 58 cm
Height 100 cm | **Height basin** 25 cm
Weight 8 kg

light granite item no. 356101
redstone item no. 356103





Rainwater infiltration

The infiltration of rainwater is getting more and more important. Towns and communities are increasing the surface water drainage charge and are calling for local on-site infiltration for new buildings.

- Ideal solution for DIY-installation – only 11 kg weight per tunnel
- Three times higher storage volume than a conventional gravel infiltration ditch
- Replaces approx. 800 kg of gravel or a 36 m DN110 drainage pipe
- Vehicle loading with ≥ 25 cm soil cover
- Different installation schemes possible. For single-family homes, apartment buildings or commercial businesses
- Allows for the free design of the surface

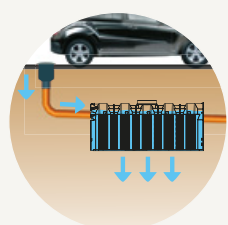
- 1 Pre-filter for roof areas
- 2 Infiltration elements
- 3 Inspection end
- 4 Ventilation



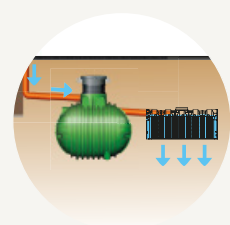
Save from now on
Surface water drainage charge



Roof drainage



Drainage of sealed surfaces

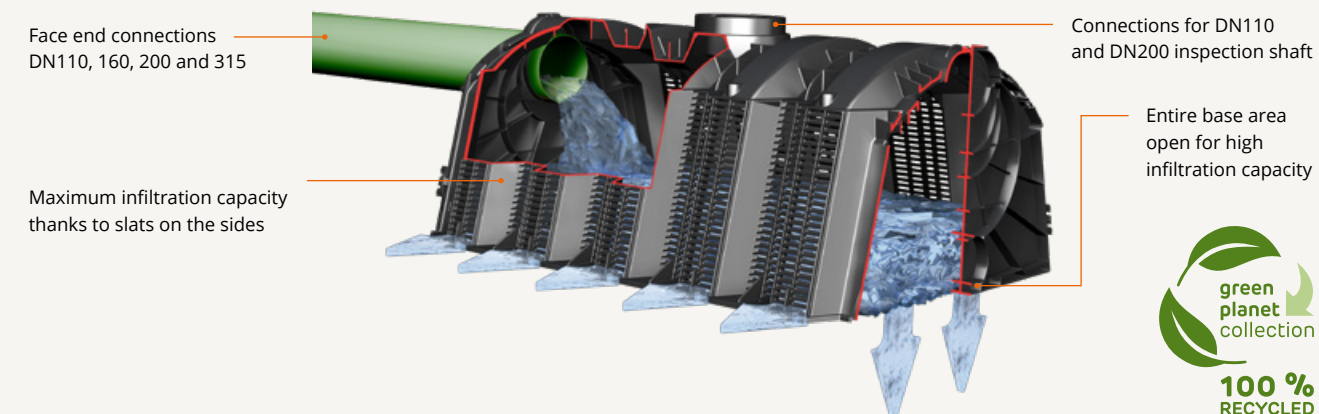


Overflow after rainwater storage

Sizing

| Soil type Kf value | Required number of infiltration tunnel | |
|----------------------|--|-----------------------|
| | at 100 m ² | at 200 m ² |
| Gravel 10-3 | 3 | 5 |
| Medium sand 10-4 | 7 | 14 |
| Fine sand 10-5 | 12 | 24 |
| Silt 10-6 | 19 | 37 |

Sizing in accordance to DWA-A 138 required. Based on rainfall data in Berlin.



Infiltration tunnel 300

300 l, lorry loading
Item no. 230010



Geotextile

For one infiltration tunnel,
250 x 250 cm
Item no. 231006



Roll width 500 cm,
material sold by the metre
Item no. 231002

End plates for infiltration tunnel

Set | 2 pieces
Item no. 231004



Deaeration end

To allow the air to escape when
filling the infiltration system

DN110, incl. connection pipe
Item no. 369017

DN160/200
Item no. 369046



Tank dome DN200

For infiltration tunnel or
Herkules infiltration tank.
With telescopic end
(100 cm long, can be shortened)
Check and inspection function
Item no. 322026



Herkules infiltration tank 1.600 l

Incl. support pipe; geotextile and filter
required (accessories)
Item no. 200201

More information about the tank on page 86



TIP
External underground fine
filter 100 % water yield
Item no. 340002 page 91



Retention tanks



A retention tank holds back rainwater and releases it to the sewer system with a delay. This relieves the sewer system during rainfalls. For the time-delayed release of the rainwater, a choke drain is installed in the retention tank. The outflow value can be set between 0.05 to 2 l/s.

During heavy rainfall, the water level of the tank rises briefly and acts as a buffer. The choke drain slowly releases the accumulated volume into the sewer system or an infiltration system.

An integrated emergency overflow in our retention tanks prevents the storage tank from overflowing.

Columbus retention tank

| Volume [l] | Item no. |
|------------|------------|
| 3.700 l | on request |
| 4.500 l | on request |
| 6.500 l | on request |

When ordering, please specify the desired outlet value between 0.05 to 2.0 l/s. Higher outlet rates on request.

Scope of supply

- 1 Columbus underground tank (page 72)
- 2 Columbus telescopic dome shaft (page 74)
- 3 Pedestrian cover (page 74)
- 4 Floating choke drain set with emergency overflow DN110

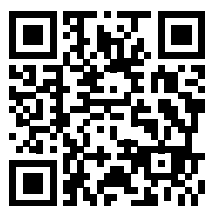
Our recommendation

- Filter package 1 (page 88)
- 5 Filter basket

GARANTIA / 4rain retention tanks

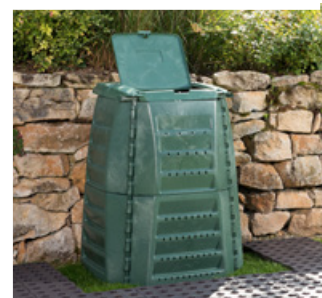
An underground retention tank retains precipitation and releases it into the sewer system gradually. This relieves pressure on the sewer during rainfall. A choke drain regulates the water flow to the sewer at a rate of 0.05 to 2 l/s. During heavy rain, the water level in the tank rises briefly and then drops again after the rain. GARANTIA / 4rain retention tanks also feature an emergency overflow.





Practical garden helpers

You will find everything on the subject of gardening in our "Garden - Practical Gardening Helpers" catalogue



Please note:

Information on all products and systems in this brochure is subject to changes and errors.

Pictures and photographs are approximate only. The applicable technical documentation for the products shall control, which we will be happy to send you on request.

All offers, deliveries and services are subject to our general terms and conditions, which we will also be happy to send you.



GARANTIA®

A trademark of
Otto Graf GmbH

Kunststofferzeugnisse

Carl-Zeiss-Straße 2 – 6

DE-79331 Teningen, Germany

Tel.: +49 7641 589-0

export@garantia.com

www.garantia.com/en

© Otto Graf GmbH / Art.-Nr. 950798/EX/EN



With kind regards: